

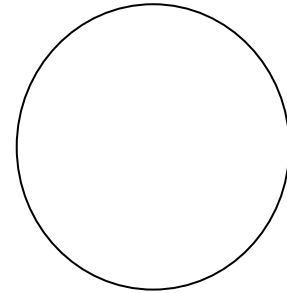
SPECIFICATION FOR APPROVAL

PRODUCT	24Vdc 3000mA SPS
MODEL	SWPP-24003000-W
PART NO.	SWPP-24003000-WA1
DESIGNED NO.	TAE-1437
VER:	A
CUSTOMER	PWK
DATE	2014-12-19

本 电 器 符 合	MEETSAFETYSTD., MEET ROHS MEET CEC STD.
AC PIN:	3

希望回签日/EXPECTED FEEDBACK BEFORE: 2014年12月28日

发行印



*未签回而下订单即视同认可!

生产工厂 /MANUFACTORY	设计验证/日期 DESIGN VERIFIED BY	设计师/日期 DESIGNED BY	工程确认/日期 Engineering Verification BY	QE 验证/日期 QE VERIFIED BY
TAE				

SHENZHEN TOP-ASIA ELECTRONICS CO., LTD.

地址: 深圳市宝安区西乡后瑞新瑞物流园 B 栋三楼

Add: 3F//A&B .XinRui Logistics pack, HouRui, HuangTian, Xixiang Town
, Baoan, Shenzhen, P. R. C.

业务联系: 채선국 (CAI SEON GUK) 070-8860-1863

E-mail: hdt7451@hanmail.net

Tel : 070-8860-1863

P. C: 518108

Fax: 031-769-1863

Index

1. Scope	4
2. Electrical Characteristics test	4
2.1 Input Characteristic	4
2.1.1 Input Voltage and Frequency	4
2.1.2 Input current	4
2.1.3 Ac inrush current	4
2.1.4 Input leakage current	4
2.1.5 Efficiency	4
2.1.6 Stand-by power consumption	4
2.2 Output Characteristic.....	5
2.2.1 Output voltage and current	5
2.2.2 Startup and Turn-on Delay	5
2.2.3 Overshoot	5
2.2.4 Short-Circuit Protection (SCP)	5
2.2.5 Over Current Protection (OCP)	5
2.2.6 Over Voltage Protection (OVP)	5
3. EMC-Specification	6
4. Safety details:	6
5. Mechanical Specifications	6
5.1 Physical	6
5.2 Input and Output Configuration	6
 附页:	
6. DC Cord.....	1
7. Production of appearance drawing	1
8. Label	1
9. PE BAG.....	1
10. Packing.....	2
11. Certificate.....	14

1 Scope:

This document describes power supply unit for the I.T.E.. This document covers all electrical, mechanical, environmental and testing aspects of the power supply unit. The power supply unit must comply with all of the requirements of this specification and the drawings and specifications referenced here in.

2 Electrical Characteristic test:

2.1 Input Characteristics:

2.1.1 Input Voltage and Frequency

The power supply shall meet all specifications when powered from the following sources.

Voltage Range	Line Frequency	Minimum Voltage	Maximum Voltage
100-240Vac	47 ~ 63 Hz	90Vac	264 Vac

2.1.2 Input Current

The maximum input current shall be less than 1.5A.

2.1.3 AC Inrush Current

At Full Load,25°C,Cold Start

115VAC,60Hz INPUT	NO damage shall be occurred and the input fuse shall not be blown up
230VAC,50Hz INPUT	

2.1.4 Input Leakage Current

The leakage current shall not exceed 3.5mA.

2.1.5 Average Efficiency

87.0% Minimum. @100%Load; 75%Load; 50%Load; 25%Load.
 Test at input 115Vac/60Hz , 230Vac/50Hz.

2.1.6 Stand-by power consumption

0.5W Max At AC nominal input@output min load

PRODUCT SPECIFICATIONS

2.2 Output Characteristics:

2.2.1 Output Voltage and Current

The power supply shall have one regulated DC output of **+24V**.

The table below defines the total regulation band for the output, which includes line regulation, load regulation, transient response, and effects due to environmental conditions and aging. Voltage shall be measured at the power supply output connector

Mode	Output Current Range		Output Voltage range		Ripple
	Min.	Max.	Min.	Max.	Max.
C.C.	0mA	3000mA	23V	25V	250mVpp

Ripple & Noise Test: Add 0.1uF/50V ceramic capacitor and 10uF/50V capacitor across the output terminal.Measured with 20MHz Bandwidth Oscilloscope.

Line regulation:<1% ; Load regulation:<5%

2.2.2 Startup and Turn-on Delay

Power supply shall be able to start up into a resistive load up to the maximum rated current with maximum load capacitance of 1,000uF. The elapsed time between the application of input power and the attainment of output voltage to the nominal value shall not exceed **3 second**.

2.2.3 Overshoot

At turn on, the output voltage shall not exceed steady state by more than **10%**.

2.2.4 Short-Circuit Protection

The Adapter is protected that a short happened between the output terminals and shall not result in a fire hazard ,and will be normal operation automatically while the short is removed.

2.2.5 Over Current Protection

No safety hazard.

2.2.6 Over Voltage Protection

No safety hazard.

Customer: Switching Mode Power Supply
Model: SWPP-24003000-W
SPECIFICATION NO.:TAE-1437
Part no.: SWPP-24003000-WA1

PRODUCT SPECIFICATIONS

3 EMC-Specification

Noise-suppressed acc: EN 55022

4 Safety details:

Standards/class	:	EN60950 ClassI
Voltage rating	input :	100Vac-240Vac 50/60Hz
	Output :	24Vdc 3000mA
High-voltage test	:	≥1.8KV/2S
Leakage current	:	Maximum leakage current is8-10mA
Application range	:	Information technology equipment Including electrical business equipment
Ambient temperature	:	0°C to +40° C , 10 to 90% rhd

5 Mechanical Specifications

5.1 Physical

Case material: PC OR PC+ABS
Dimensions: 138.5mm(L) x 61mm(W) x 36mm(H)

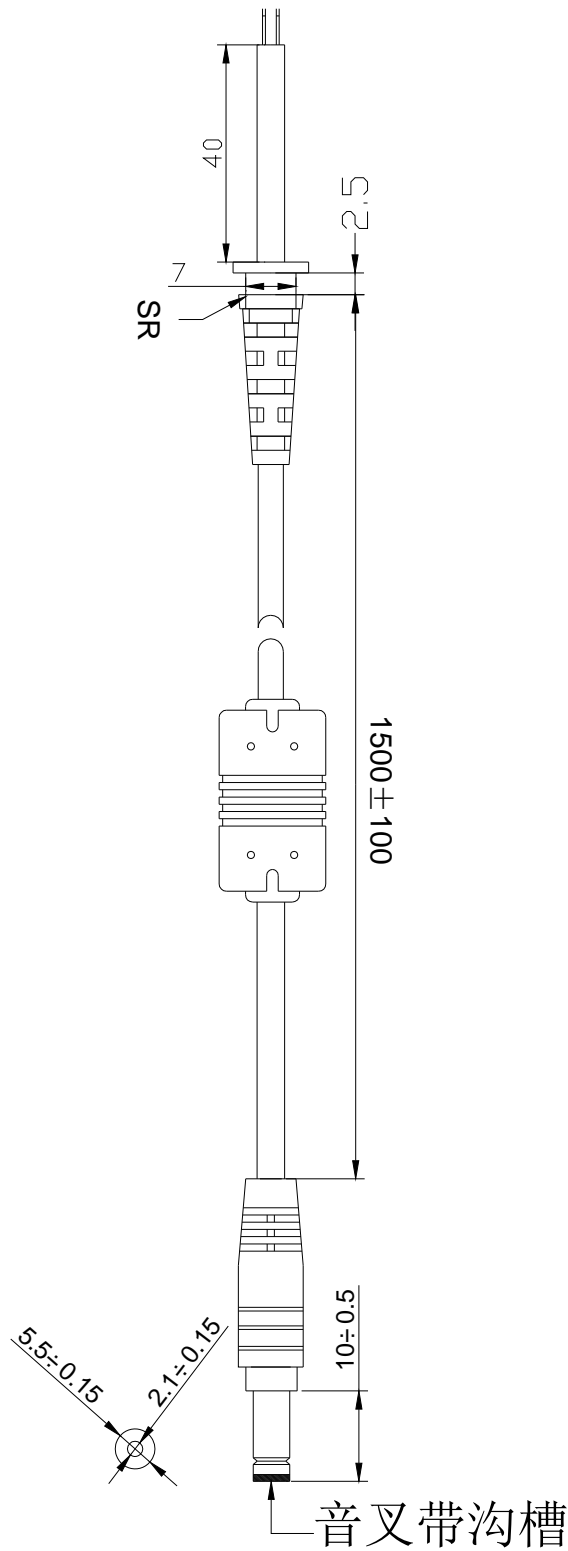
5.2 Input and Output Configuration

Input Pin: IEC 3 pins
Output Connector: 2.5*5.5*10mm “H”type 音叉带沟槽
Polarity: Center positive
Cord: AWM1185 18AWG 1.5M

Customer: Switching Mode Power Supply
Model: SWPP-24003000-W
SPECIFICATION NO.:TAE-1437
Part no.: SWPP-24003000-WA1

PRODUCT SPECIFICATIONS

6 DC Cord drawing (black) :

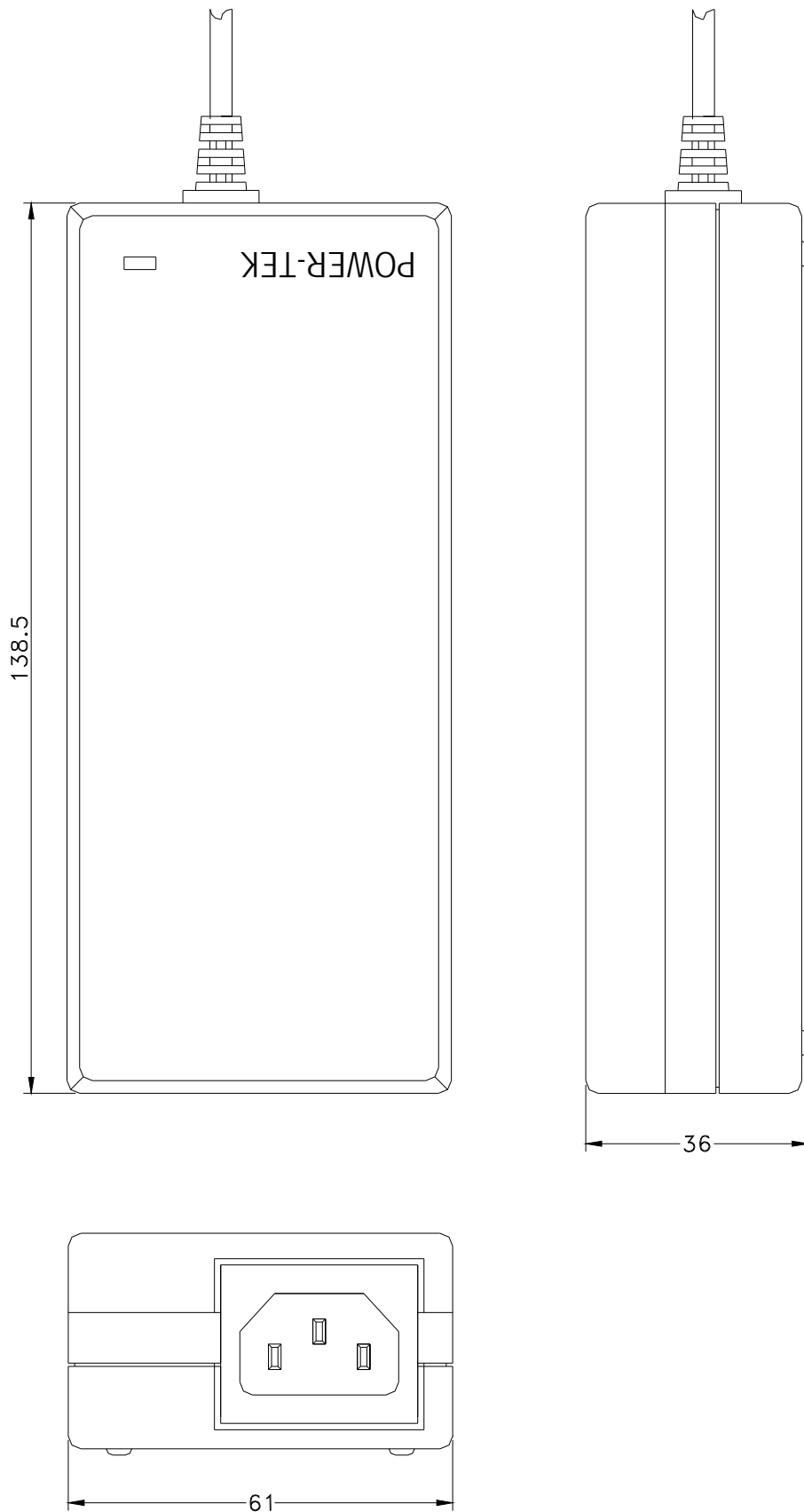


WIRE:AWM1185 18AWG
DC PLUG: $\Phi 5.5*2.5*10$ mm
COLOR:BLACK

Customer: Switching Mode Power Supply
Model: SWPP-24003000-W
SPECIFICATION NO.:TAE-1437
Part no.: SWPP-24003000-WA1

PRODUCT SPECIFICATIONS

7 Production of appearance drawing(black):



Customer: Switching Mode Power Supply
 Model: SWPP-24003000-W
 SPECIFICATION NO.:TAE-1437
 Part no.: SWPP-24003000-WA1

PRODUCT SPECIFICATIONS

8 Label:

$39.8^{+0}_{-0.2}$

POWER-TEK 电源适配器
Power-Tek AC/DC ADAPTER
 MODEL/型号: SWPP-24003000-W
 PART/料号: SWPP-24003000-WA1
 INPUT/输入: 100-240V~50/60Hz,1.5A
 OUTPUT/输出: 24V \equiv 3.0A

직류전원장치
 모델명 :SWPP-24003000-W
 정격입력 :100-240V~50/60Hz 1.5A
 정격출력 : 24V \equiv 3.0A

제조사: SHENZHEN TOP-ASIA ELECTRONICS CO.,LTD
HONGKONG POWER-TEK INTERNATIONAL CO.,LTD
 제조국 : CHINA

전기용품안전관리법에 의한 표시

HU10553-14018
A/S 센터:

届出事業者

www.tuv.com
ID 1000000000

geprüfte
Sicherheit

A072221

LISTED
E333054
46AV
I.T.E.POWER SUPPLY

CAUTION 注意:
 FOR INDOOR USED ONLY
 仅限室内使用
 RISK OF ELECTRIC SHOCK
 内有高压危险
 DRY LOCATION USE ONLY
 仅限在干燥地点使用

MADE IN CHINA 中国制造

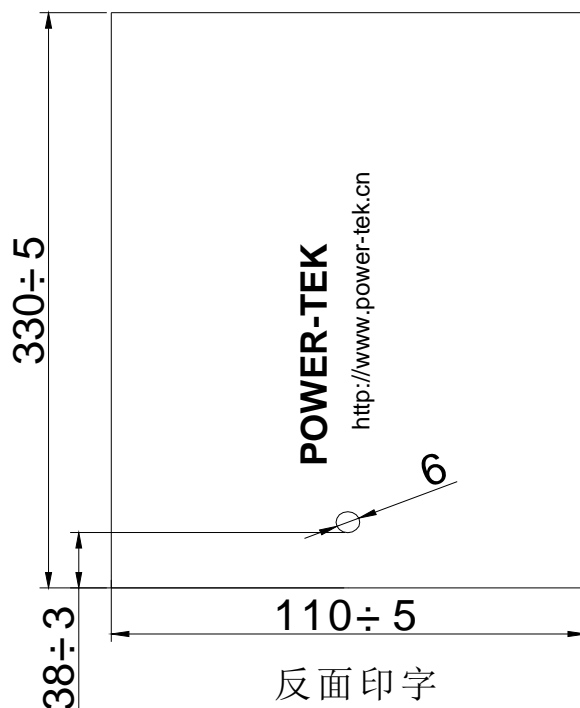
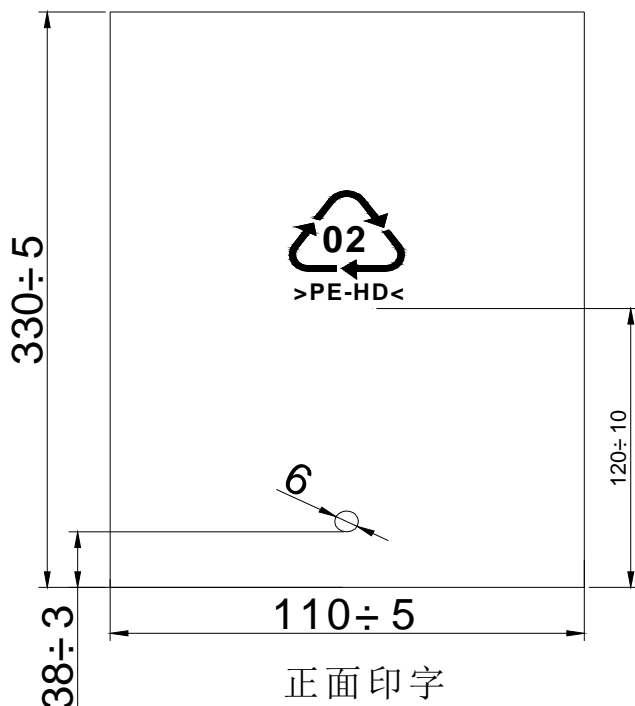
$80.2^{+0}_{-0.2}$

备注:

1. 颜色: 黑底白色
2. PART NO:为厂内的料号管控码可变

PRODUCT SPECIFICATIONS

9 PE BAG:



NOTE:

1. 材质：PE材质
2. 厚度：0.06mm
3. 颜色：透明
4. 印字颜色：黑色

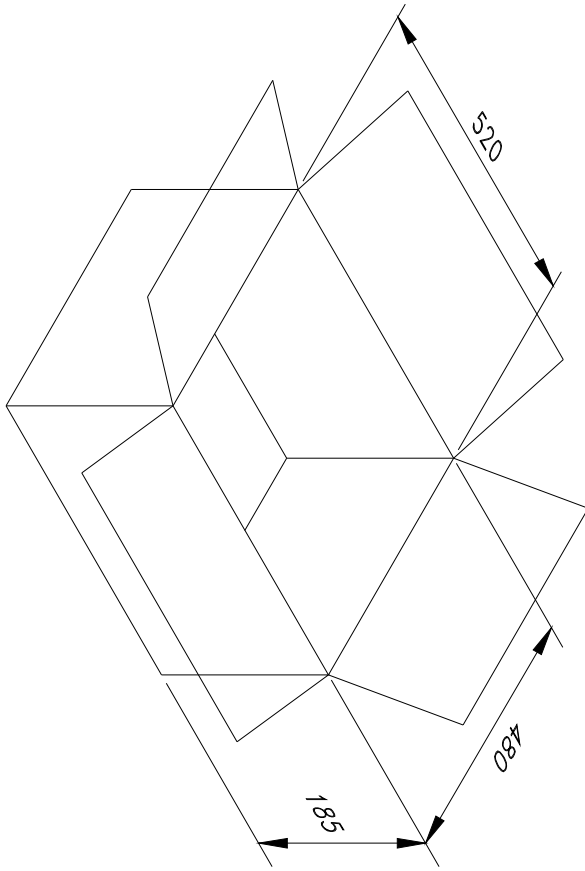
Customer: Switching Mode Power Supply

Model: SWPP-24003000-W

SPECIFICATION NO.: TAE-1437

Part no.: SWPP-24003000-WA1

PRODUCT SPECIFICATIONS



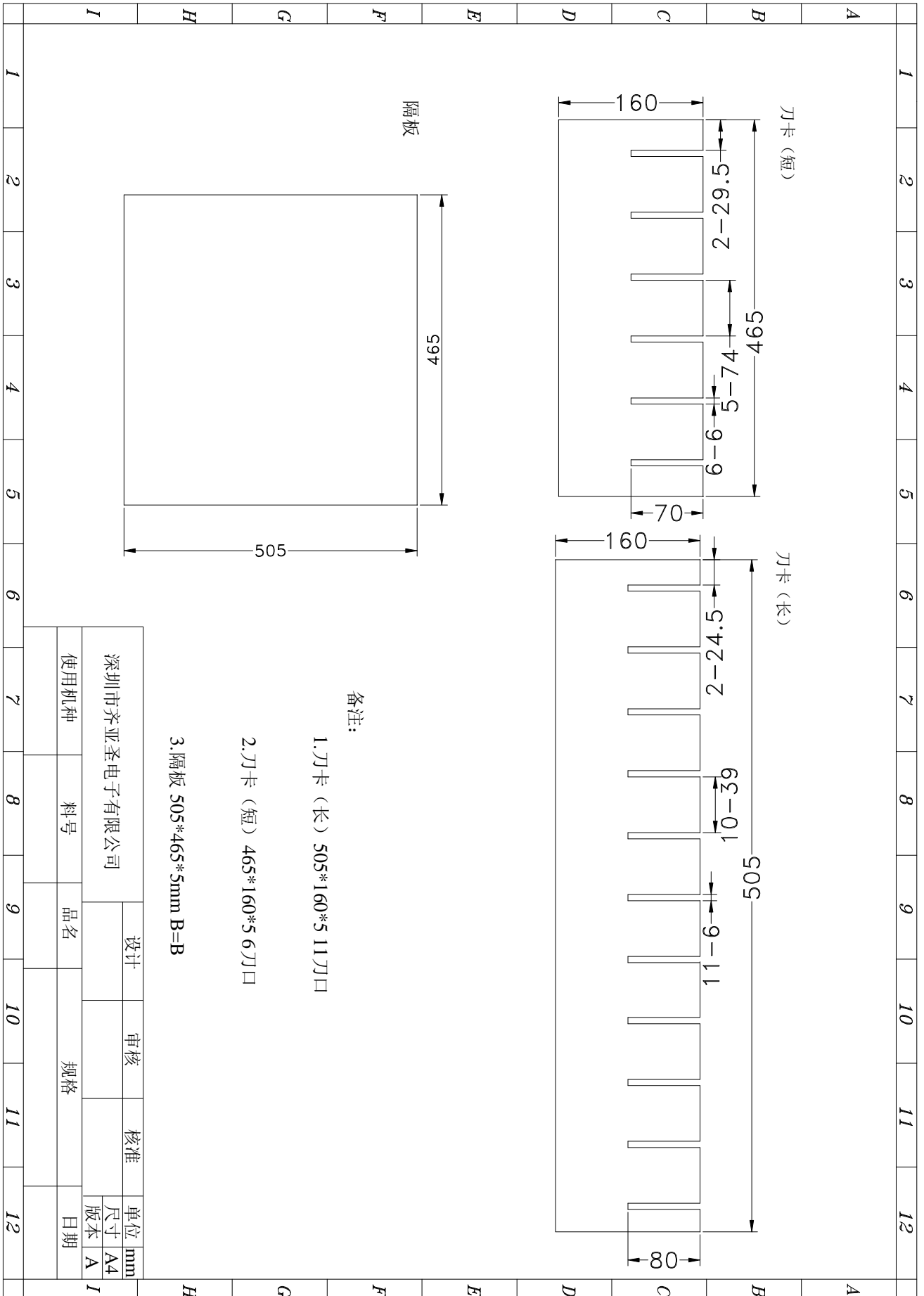
备注:

1. 纸箱材质为K=K
2. 外箱尺寸为外部尺寸, 公差为: +5,-0.
3. 装箱方式: PE袋+#字格包装, 50PCS/箱

1	2	3	4	5	6	7	8	9	10	11	12	A	B	C	D	E	F	G	H	I																										
<div style="display: flex; justify-content: space-between;"> <div style="width: 40%;"> <p style="text-align: center;">深圳市齐亚圣电子有限公司</p> <table border="1" style="width: 100%;"> <tr> <td>使用機種</td><td>料号</td><td>品名</td><td>规格</td><td>日期</td></tr> <tr> <td></td><td></td><td>外箱</td><td></td><td></td></tr> </table> </div> <div style="width: 40%; text-align: right;"> <table border="1" style="width: 100%;"> <tr> <td>设计</td><td>审核</td><td>核准</td><td>单位</td></tr> <tr> <td></td><td></td><td></td><td>尺寸 mm</td></tr> <tr> <td></td><td></td><td></td><td>版本 A4</td></tr> <tr> <td></td><td></td><td></td><td>日期 A</td></tr> </table> </div> </div>												使用機種	料号	品名	规格	日期			外箱			设计	审核	核准	单位				尺寸 mm				版本 A4				日期 A	I	H	G	F	E	D	C	B	A
												使用機種	料号	品名	规格	日期																														
														外箱																																
												设计	审核	核准	单位																															
			尺寸 mm																																											
			版本 A4																																											
			日期 A																																											
I	2	3	4	5	6	7	8	9	10	11	12																																			

Customer: Switching Mode Power Supply
 Model: SWPP-24003000-W
 SPECIFICATION NO.: TAE-1437
 Part no.: SWPP-24003000-WA1

PRODUCT SPECIFICATIONS



备注:

1. 刀卡 (长) 505*160*5 11刀口

2. 刀卡 (短) 465*160*5 6刀口

3. 隔板 505*465*5mm B=B

深圳市齐亚圣电子有限公司		设计	审核	核准	单位
使用机种	料号	品名	规格	尺寸	mm
				版本	A4
				日期	A

Customer: Switching Mode Power Supply
 Model: SWPP-24003000-W
 SPECIFICATION NO.:TAE-1437
 Part no.: SWPP-24003000-WA1

PRODUCT SPECIFICATIONS

[별지 제2호서식]



접수번호 : 20140714 - 0042

전기용품안전인증서 Electrical Appliances Safety Certificate

안전인증번호: HU10553-14018A
 (Certificate No.)
 제조업자명: Shenzhen Top-Asia Electronics Co., Limited.
 (Manufacturer)
 대표자명: DAOL WONG
 (President)
 제조공장의소재지: 3F/B, XinRui Logistics Park HouRui Village, HuangTian, Bao'an,
 (Factory Address) Shenzhen city, Guangdong, China.
 제품명: 직류전원장치
 (Product)
 기본모델명: SWPP-12006000-W
 (Basic Model)
 정격: 100-240 V~, 50/60 Hz, 1.5 A (O/P : 12 Vdc, 6 A)
 (Rating)
 파생모델명 (Series Model):
 SWPP-12005500-W SWPP-12605500-W
 SWPP-14404000-W SWPP-14404500-W
 SWPP-14405000-W SWPP-15004500-W
 SWPP-16004500-W SWPP-17004000-W
 SWPP-18003500-W SWPP-18003600-W
 SWPP-18003700-W SWPP-18003800-W
 SWPP-18003900-W SWPP-18004000-W
 SWPP-20003500-W SWPP-24003000-W

적용기준: K 60950-1(2.0)(2011-12)
 (Standard)

「전기용품안전 관리법 시행규칙」 제6조제2항에 따라 위의 전기용품에 대하여 안전인증서를 발급합니다.
 We issue this Electrical Appliances Safety Certificate for the above electrical appliance in accordance with the Article 6(2) of the Enforcement Rule of the Electrical Appliances Safety Control Act.



2014 년 8 월 8 일
 (Year) (Month) (Day)

한국기계전기전자시험연구원
 Korea Testing Certification



※ 본 인증서는 「전기용품안전 관리법」에 따른 전기제품 안전성확인에 한정된 것이며, 그 밖의 다른 법률이 적용되는 제품의 경우에는 해당 법률에 따라 추가적으로 인증·허가 등을 받아야 합니다.

- 첨부서류 1. 안전관리부품 및 재질목록 (List of Critical Components)
 2. 기본모델·파생모델의 내용 (General Descriptions of Certified Products)
 3. 전기용품안전인증의 변경현황 (Status of Certificate Revisions)

안전인증서의 조건 : 동 제품의 생산 시 자체검사를 실시하고 안전인증 시 등록된 부품누락 및 임의 변경하지 말 것.
 Conditions of Safety Certification : In the production of this product, conduct a self-test and do not miss and change the registered components.

Customer: Switching Mode Power Supply
Model: SWPP-24003000-W
SPECIFICATION NO.:TAE-1437
Part no.: SWPP-24003000-WA1

PRODUCT SPECIFICATIONS

FCC VERIFICATION OF COMPLIANCE

Date of Issue: 2012/08/16

Attestation Number: SEFV1207123

Product: AC/DC Adapter

Model No.: SWPP-xxxxyyyyy-W ("xxxx" can be 1200-2400 denote different output voltage, 1200=12.0Vdc, 2400=24.0Vdc, "yyyy" can be 2500-8300 denote different output current, 2500=2.50A, 8300=8.30A W=Denote product type.)

Applicant: HONGKONG POWER-TEK INTERNATIONAL CO. LIMITED.

Address: ROOM 1708A1 NAN FUNG TOWER, 173 DES VOEUX ROAD C., HONG KONG

And, in accordance to the following Applicable Directives
Applicable to ANSI C63.4-2009

(The Information Technology Equipment for Industrial Environment)

That this product has been assessed against the following Applicable Standards
CISPR PUB. 22 and FCC Part 15 Subpart B Class B (Verification)

This Verification of Compliance is hereby issued to the above named company.
The test Results of this report relate only to the tested sample identified in this report.

Attestation by:


Miro Chueh/ Technical director

2012/08/16
Date

CERPASS TECHNOLOGY CORPORATION

No.66, Tangzhuang Road, Suzhou Industrial Park, Jiangsu, China

TEL: +86-512-6917-5888 FAX: +86-512-69175666

Customer: Switching Mode Power Supply
 Model: SWPP-24003000-W
 SPECIFICATION NO.:TAE-1437
 Part no.: SWPP-24003000-WA1

PRODUCT SPECIFICATIONS

Zertifikat

Certificate



Zertifikat Nr. *Certificate No.*
 S1 50235565

Blatt *Page*
 0001

Ihr Zeichen <i>Client Reference</i>	Unser Zeichen <i>Our Reference</i>	Längstens gültig bis <i>Latest expiration date</i>	<i>(day/mo/yr)</i>
173067179	05-YBW- 16044280 001	29.08.2017	

Genehmigungsinhaber *License Holder*
 Hongkong Power-Tek International
 Co., Limited
 Room 1708A1 Nan Fung Tower
 173 Des Voeux Road C.
 Hong Kong

Fertigungsstätte *Manufacturing Plant*
 Shenzhen Top-Asia Electronics
 Co., Ltd.
 3F//B XinRui Logistics Pack
 HouRui Huang'Tian Bao'an
 Shenzhen, Guangdong 518102
 P.R. China

Prüfzeichen *Test Mark*



Geprüft nach *Tested acc. to*
 EN 60950-1:2006+A1+A1+A2
 ZEK 01.4-08/11.11

Der Anhang I der Richtlinie 2006/95/EG ist eingehalten. Das Zertifikat kann im Rahmen der Konformitätserklärung nach Anhang III verwendet werden.
Annex I of the directive 2006/95/EC is complied with. The certificate can be used in connection with the EC declaration of conformity acc. to Annex III.

Zertifiziertes Produkt (Geräteidentifikation)
Certified Product (Product Identification)

Lizenzentgelte - Einheit
License Fee - Unit

Netzgerät AC/DC Adapter

Serienbezeichnung : SWPP-xxxxxyyy-W 15
 (Series Type Designation)

x = Vierstellige Zahl, welche die Ausgangsspannung in V angibt, nach Teilung der Zahl durch 100.
 (Are 4 numerical digits, which represent the output voltage in V after dividing by 100.)

y = Vierstellige Zahl, welche den Ausgangsstrom in A angibt, nach Teilung der Zahl durch 100.
 (Are 4 numerical digits, which represent the output current in A after dividing by 100.)

Nenneneingangswerte : AC 100-240V, 50/60Hz, 1,5A
 (Rated Input Values)

Schutzklasse (Protection Class) : I
 Umgebungstemperatur (Ambient Temperature) : 25°C

Geprüfte Ausgangswerte siehe Blätter 0002.
 (Tested Output Values see pages 0002.)

15

ANLAGE (Appendix): 1

Dem Zertifikat liegt unsere Prüf- und Zertifizierungsordnung zugrunde. Produkt und Fertigungsstätte erfüllen § 20 und § 21 des Produktsicherheitsgesetzes.
This certificate is based on our Testing and Certification Regulation. Product and production fulfill par § 20 and § 21 of the Product Safety Law.

TÜV Rheinland LGA Products GmbH - Tillystraße 2 - 90431 Nürnberg
 Tel.: (+49/221)8 06 - 13 71 e-mail: cert-validity@de.tuv.com
 Fax: (+49/221)8 06 - 39 35 http://www.tuv.com/safety



Dipl.-Ing. (FH) T. Zimmer

Ausstellungsdatum *Date of Issue* : 30.08.2012 (day/mo/yr)

Customer: Switching Mode Power Supply
 Model: SWPP-24003000-W
 SPECIFICATION NO.:TAE-1437
 Part no.: SWPP-24003000-WA1

PRODUCT SPECIFICATIONS

Zertifikat

Certificate



Zertifikat Nr. *Certificate No.*
 S1 50235565 Blatt *Page*
 0002

Ihr Zeichen <i>Client Reference</i> 173067179	Unser Zeichen <i>Our Reference</i> 05-YBW- 16044280 001	Längstens gültig bis <i>Latest expiration date</i> 29.08.2017 <small>(day/mo/yr)</small>
--	--	--

Genehmigungsinhaber *License Holder*
 Hongkong Power-Tek International
 Co., Limited
 Room 1708A1 Nan Fung Tower
 173 Des Voeux Road C.
 Hong Kong

Fertigungsstätte *Manufacturing Plant*
 Shenzhen Top-Asia Electronics
 Co., Ltd.
 3F//B XinRui Logistics Park
 HouRui Huang'Tian Bao'an
 Shenzhen, Guangdong 518102
 P.R. China

Prüfzeichen *Test Mark*



Gepprüft nach *Tested acc. to*
 EN 60950-1:2006+A11+A1+A12
 ZEK 01.4-08/11.11

Der Anhang I der Richtlinie 2006/95/EG ist eingehalten. Das Zertifikat kann im Rahmen der Konformitätserklärung nach Anhang III verwendet werden.
Annex I of the directive 2006/95/EC is complied with. The certificate can be used in connection with the EC declaration of conformity acc. to Annex III.

Zertifiziertes Produkt *(Geräteidentifikation)*
Certified Product (Product Identification)

Lizenzentgelte - Einheit
License Fee - Unit

Netzgerät AC/DC Adapter

wie Blatt (as page) 01
 Fortsetzung (Continuation)

Ausgangsspannung (Output Voltage)	Ausgangsstrom (Output Current)	Ausgangsleistung (Output Power)
DC (V)	A	Max. (W)
12,0-24,0	2,50-8,30	99,84

Vermerk: Ausgangsspannung und -strom haben Werte mit der Schrittweite 0,1V bzw. 0,01A. Nach Multiplikation beider Werte sind Modellbezeichnungen limitiert durch die max. Ausgangsleistung.

(Remark: Output voltage and -current have values in steps of 0,1V resp. 0,01A. By multiplication of both values the type designations are limited through the max.output power.)

Dem Zertifikat liegt unsere Prüf- und Zertifizierungsordnung zugrunde. Produkt und Fertigungsstätte erfüllen § 20 und § 21 des Produktsicherheitsgesetzes.
This certificate is based on our Testing and Certification Regulation. Product and production fulfill par § 20 and § 21 of the Product Safety Law.

TÜV Rheinland LGA Products GmbH - Tillystraße 2 - 90431 Nürnberg
 Tel.: (+49/221)8 06 - 13 71 e-mail: cert-validity@de.tuv.com
 Fax: (+49/221)8 06 - 39 35 http://www.tuv.com/safety

Zertifizierungsstelle



Timmer

Dipl.-Ing. (FH) T. Zimmer

Ausstellungsdatum *Date of Issue* : 30.08.2012 (day/mo/yr)

Customer: Switching Mode Power Supply
Model: SWPP-24003000-W
SPECIFICATION NO.:TAE-1437
Part no.: SWPP-24003000-WA1

PRODUCT SPECIFICATIONS

C E R T I F I C A T E



of Conformity
Low Voltage Directive 2006/95/EC

Registration No.: AN 50235570 0001

Report No.: 16044280 001

Holder: Hongkong Power-Tek International
Co., Limited
Room 1708A1 Nan Fung Tower
173 Des Voeux Road C.
Hong Kong

Product: Power Supply
AC/DC Adapter

Identification: Series Type Designation : SWPP-xxxxxyyyy-W
For a detailed listing of the variables xxxx, yyyy refer to
license S1 50235565 0001-0002.

Serial No.: n.a.
(Issued in conjunction with above TÜV Rheinland license.)

This certificate of conformity is based on an evaluation of a sample of the above mentioned product. Technical Report and documentation are at the Licence Holder's disposal. This is to certify that the tested sample is in conformity with all revision of Annex I of Council Directive 2006/95/EC, in its latest amended version, referred to as the Low Voltage Directive. This certificate does not imply assessment of the series-production of the product and does not permit the use of a TÜV Rheinland mark of conformity. The holder of the certificate is authorized to use this certificate in connection with the EC declaration of conformity according to Annex III of the Directive.

Certification Body



Date 30.08.2012


Dipl.-Ing. (FH) T. Zimmer

TÜV Rheinland LGA Products GmbH - Tillystraße 2 - 90431 Nürnberg

CE The CE marking may be used if all relevant and effective EC Directives are complied with. CE

Customer: Switching Mode Power Supply
Model: SWPP-24003000-W
SPECIFICATION NO.:TAE-1437
Part no.: SWPP-24003000-WA1

PRODUCT SPECIFICATIONS



中国国家强制性产品认证证书

证书编号: 2012010907583641

委托人名称、地址

香港通用电源国际有限公司
香港德辅道中173号南丰大厦1708A1室

生产者(制造商)名称、地址

香港通用电源国际有限公司
香港德辅道中173号南丰大厦1708A1室

生产企业名称、地址

深圳市齐亚圣电子有限公司
深圳市宝安区西乡街道后瑞社区新瑞工业园B栋第三层北侧部分B区

产品名称和系列、规格、型号

电源适配器

见附表(仅适用于海拔2000米及以下)(仅适用于非热带气候条件)

产品标准和技术要求

GB4943.1-2011; GB9254-2008; GB17625.1-2012

上述产品符合强制性产品认证实施规则
CNCA-01C-020: 2010的要求, 特发此证。

发证日期: 2013年08月20日 有效期至: 2017年10月26日

证书有效期内本证书的有效性依据发证机构的定期监督获得保持。

本证书为变更证书, 证书首次颁发日期: 2012年11月29日

本证书的相关信息可通过国家认监委网站www.cnca.gov.cn查询



主任:

中国质量认证中心

中国·北京·南四环西路188号9区 100070

<http://www.cqc.com.cn>



Q 0749198

Customer: Switching Mode Power Supply
Model: SWPP-24003000-W
SPECIFICATION NO.:TAE-1437
Part no.: SWPP-24003000-WA1

PRODUCT SPECIFICATIONS



CERTIFICATE FOR CHINA COMPULSORY PRODUCT CERTIFICATION

No. : 2012010907583641

NAME AND ADDRESS OF THE APPLICANT

Hong Kong Power-TEK International Co., Limited
ROOM 1708A1 NANFUNG TOWER., 173 DES VOEUXROAD C., HONGKONG

NAME AND ADDRESS OF THE MANUFACTURER

Hong Kong Power-TEK International Co., Limited
ROOM 1708A1 NANFUNG TOWER., 173 DES VOEUXROAD C., HONGKONG

NAME AND ADDRESS OF THE FACTORY

Shenzhen Top-Asia Electronics Co., Ltd
3F/B XinRui Logistics Park HouRui Huang Tian Bao'an Shenzhen

NAME, MODEL AND SPECIFICATION

AC/DC Adapter

See appendix (Altitude up to 2000m) (Non-tropical climate)

THE STANDARDS AND TECHNICAL REQUIREMENTS FOR THE PRODUCTS

GB4943.1-2011;GB9254-2008;GB17625.1-2012

This is to certify that the above mentioned products have met the requirements of implementation rules for compulsory certification (REF NO. CNCA-01C-020:2010).

Date of issue: Aug. 20, 2013 Date of expiry: Oct. 26, 2017

Validity of this certificate is subject to positive result of the regular follow up inspection by issuing certification body until the expiry date.

Date of original certification: Nov. 29, 2012

This certificate can be verified through CNCA's website: www.cnca.gov.cn



President:

Wang Kejiao

CHINA QUALITY CERTIFICATION CENTRE

Section 9, No. 188, Nanshuan Xilu, Beijing 100070 P.R. China



Customer: Switching Mode Power Supply
 Model: SWPP-24003000-W
 SPECIFICATION NO.:TAE-1437
 Part no.: SWPP-24003000-WA1

PRODUCT SPECIFICATIONS



中国国家强制性产品认证证书

附录:

第 1 页 共 2 页

证书编号: 2012010907583641

纸号: 749198

产品: 电源适配器

型号: SWPP-xxxxyyyy-W ("xxxx" 表示 1200-2400 表示不同的输出电压, 从 12V 到 24V, "yyyy" 表示 2500-8300 表示不同的输出电流, 从 2.5A 到 8.3A)

输入: 100-240V, 50-60Hz, 1.5A, 输出见以下附表

型号列表:

序号	型号	Output Voltage (V) 输出电压	Output current (A) Max 输出最大电流	Output Power (W) Max 输出最大功率
1	SWPP-12006000-W	12.00	2.50-6.00	72.00
2	SWPP-12006670-W	12.00	2.50-6.67	80.04
3	SWPP-12007000-W	12.00	2.50-7.00	84.00
4	SWPP-12007500-W	12.00	2.50-7.50	90.00
5	SWPP-12008300-W	12.00	2.50-8.30	99.60
6	SWPP-12607500-W	12.60	2.50-7.50	94.50
7	SWPP-13007500-W	13.00	2.50-7.50	97.50
8	SWPP-14007000-W	14.00	2.50-7.00	98.00
9	SWPP-14406800-W	14.40	2.50-6.80	97.92
10	SWPP-15006600-W	15.00	2.50-6.60	99.00
11	SWPP-15506400-W	15.50	2.50-6.40	99.20
12	SWPP-16006200-W	16.00	2.50-6.20	99.20
13	SWPP-16506000-W	16.50	2.50-6.00	99.00
14	SWPP-17005800-W	17.00	2.50-5.80	98.60
15	SWPP-17505600-W	17.50	2.50-5.60	98.00
16	SWPP-18005500-W	18.00	2.50-5.50	99.00
17	SWPP-18505300-W	18.50	2.50-5.30	98.05

注: 此附录与证书同时使用时有效。



主任:

中国质量认证中心

中国 · 北京 · 南四环西路 188 号 9 区 100070

<http://www.cqc.com.cn>



Customer: Switching Mode Power Supply
 Model: SWPP-24003000-W
 SPECIFICATION NO.:TAE-1437
 Part no.: SWPP-24003000-WA1

PRODUCT SPECIFICATIONS



中国国家强制性产品认证证书

附录:

第 2 页 共 2 页

证书编号: 2012010907583641

纸号: 749198

18	SWPP-19005200-W	19.00	2.50-5.20	98.80
19	SWPP-19004740-W	19.00	2.50-4.74	90.06
20	SWPP-19505100-W	19.50	2.50-5.10	99.45
21	SWPP-20004900-W	20.00	2.50-4.90	98.00
22	SWPP-20504800-W	20.50	2.50-4.80	98.40
23	SWPP-21004700-W	21.00	2.50-4.70	98.70
24	SWPP-21504600-W	21.50	2.50-4.60	98.90
25	SWPP-22004500-W	22.00	2.50-4.50	99.00
26	SWPP-22504400-W	22.50	2.50-4.40	99.00
27	SWPP-23004300-W	23.00	2.50-4.30	98.90
28	SWPP-23504200-W	23.50	2.50-4.20	98.70
29	SWPP-24003000-W	24.00	2.50-3.00	72.00
30	SWPP-24003750-W	24.00	2.50-3.75	90.00
31	SWPP-24004000-W	24.00	2.50-4.00	96.00
32	SWPP-24004160-W	24.00	2.50-4.16	98.84

注: 此附录与证书同时使用时有效。



主任:

中国质量认证中心

中国·北京·南四环西路188号9区 100070

<http://www.cqc.com.cn>



Customer: Switching Mode Power Supply
 Model: SWPP-24003000-W
 SPECIFICATION NO.:TAE-1437
 Part no.: SWPP-24003000-WA1

PRODUCT SPECIFICATIONS

適合証明書 Certificate of Conformity



証明書番号 Certificate No. JD 50236042
 ページ Page 1

申請者照会番号 Applicant Reference 143224480
 検査機関照会番号 Our Reference 01-NGS-16044282 001
 発行年月日 Date of Issue 2012年09月03日

申請者 Applicant ShenZhen Top-Asia Electronics Co., Ltd.
 3F//B XinRui Logistics Pack HouRui Huang Tian
 Bao'an Shenzhen Guangdong, 518102, P.R. China
 製造工場 Factory ShenZhen Top-Asia Electronics Co., Ltd.
 3F//B XinRui Logistics Pack HouRui Huang Tian
 Bao'an Shenzhen Guangdong, 518102, P.R. China



検査の方法 Inspection Method

- ・ 技術基準 省令第2項：J60950-1(H22), J55022(H22), J3000(H21)
 Technical Requirements Clause 2: J60950-1(H22), J55022(H22), J3000(H21)
- ・ 施行規則別表第四（交流用電気機械器具）
 Appendix 4 of the Enforcement Regulations (AC Electric Appliances)

特定電気用品名 : 直流電源装置
 Name of Specified Electrical Appliance and Material DC Power Supply Unit

型式の区分 : (「添付 1.0, 1.1」参照)
 Type Classification (Refer to 'Attachment 1.0, 1.1')

海外製造事業者 : ShenZhen Top-Asia Electronics Co., Ltd.
 Overseas Manufacturer 3F//B XinRui Logistics Pack HouRui Huang Tian Bao'an Shenzhen Guangdong, 518102, P.R. China

客先名 : HongKong Power-tek International Co., Limited
 Client ROOM 1708A1 NAN FUNG TOWER, 173 DES VOEUX ROAD C., HONG KONG

証明書の有効期間 : 本証明書は、施行令で規定された期間である2017年09月02日まで有効です。
 Validity of Certificate This certificate is effective until 02 September 2017, being the period stipulated by the Enforcement Ordinance.

これは、上記申請者より申請のあった上記特定電気用品及び製造工場が、電気用品安全法第八条第一項に規定する技術基準及び同法第九条第二項の経済産業省令で定める基準に適合していることを証明するものです。

This is to certify that the above-mentioned Specified Electrical Appliances and Materials and the factory which the above-mentioned applicant applied for have been complied with the Technical Requirements stipulated by Article 8, Paragraph 1 of the Electrical Appliance and Material Safety Law and the requirements stipulated by the METI Ordinance specified in Article 9, Paragraph 2 of the said law.

テュフ ラインランド 香港 リミテッド
 TÜV Rheinland Hong Kong Ltd.

ゴールドフィンancialグローバルスクエア8-10F,
 7望天イロード、クローンベイ、クローン、香港
 8-10 Floor, Golden Financial Global Square,
 7 Wang Tai Road, Kowloon Bay,
 Kowloon, Hong Kong



発行者 Issued by

氏名 Name Marvin Wong

Customer: Switching Mode Power Supply
 Model: SWPP-24003000-W
 SPECIFICATION NO.:TAE-1437
 Part no.: SWPP-24003000-WA1

PRODUCT SPECIFICATIONS



添付 Attachment : 1.0 発行日 Date of Issue : 2012年09月03日

【型式の区分 Type Classification】

型式区分管理 No. (Type Classification Control No.) : CL-01

証明書番号 (Certificate No.) : JD 50236042

特定電気用品名 (Name of Specified Electrical Appliance and Material) : 直流電源装置
DC Power Supply Unit

申請者 (Applicant) : ShenZhen Top-Asia Electronics Co., Ltd.

海外製造事業者 (Overseas Manufacturer/factory) : ShenZhen Top-Asia Electronics Co., Ltd.

客先名 (Client) : HongKong Power-tek International Co., Limited

要素 Factor	区分 Classification
定格入力電圧 (Rated input voltage)	125V 以下のもの 及び 125V を超えるもの (125V or less, and Exceeding 125V)
入力側の定格容量 (Rated capacity on input side)	100VA を超え 200VA 以下のもの (Exceeding 100VA, and less than or equal to 200VA)
定格周波数 (変圧器を有するものの場合に限る。) (Rated frequency (limited to those with transformer))	50Hz のもの 及び 60Hz のもの (50Hz and 60Hz)
交流用端子 (AC terminal)	ないもの (Without AC terminal)
直流定格電圧 (Rated DC voltage)	15V 以下のもの (15V or less)
変圧器 (Transformer)	あるもの (With transformer)
変圧器の巻線の絶縁の種類 (Transformer winding insulation class)	B 種のもの (Class B)
直流電圧の調整装置 (DC voltage adjusting mechanism)	ないもの (Without adjusting mechanism)
回路の保護機構 (Circuit protection device)	あるもの (With circuit protection device)
器体スイッチ (Body switch)	ないもの (Without body switch)
外郭の材料 (Outer case material)	合成樹脂のもの (Plastic)
用途 (Application)	その他のもの (Other)
電源電線と器体との接続の方式 (Method of attaching power supply cord)	接続器利用のもの (Coupling Device)
二重絶縁 (Double insulation)	施してないもの (Without double insulation)

テュフ ラインランド 香港 リミテッド
 TÜV Rheinland Hong Kong Ltd.

ゴールドフィンancialグローバルスクエア5-10F,
 77 望天路, 九龍灣, 香港
 8-10 Floor, Goldin Financial Global Square,
 7 Wang Tai Road, Kowloon Bay,
 Kowloon, Hong Kong

発行者 Issued by



J. S. Nama Marven Wong

Customer: Switching Mode Power Supply
 Model: SWPP-24003000-W
 SPECIFICATION NO.:TAE-1437
 Part no.: SWPP-24003000-WA1

PRODUCT SPECIFICATIONS



添付 Attachment : 1.1

発行日 Date of issue : 2012年09月03日

【型式の区分 Type Classification】

型式区分管理 NO: (Type Classification Control No.) : CL-01

証明書番号 (Certificate No.) : JD 50236042

特定電気用品名 (Name of Specified Electrical Appliance and Material) : 直流電源装置
 DC Power Supply Unit

申請者 (Applicant) : ShenZhen Top-Asia Electronics Co., Ltd.

海外製造事業者 (Overseas Manufacturer/factory) : ShenZhen Top-Asia Electronics Co., Ltd.

客先名 (Client) : HongKong Power-tek International Co., Limited

要素 Factor	区分 Classification
定格入力電圧 (Rated input voltage)	125V 以下のもの 及び 125V を超えるもの (125V or less, and Exceeding 125V)
入力側の定格容量 (Rated capacity on input side)	100VA を超え 200VA 以下のもの (Exceeding 100VA, and less than or equal to 200VA)
定格周波数 (変圧器を有するものの場合に限る。) (Rated frequency (limited to those with transformer))	50Hz のもの 及び 60Hz のもの (50Hz and 60Hz)
交流用端子 (AC terminal)	ないもの (Without AC terminal)
直流定格電圧 (Rated DC voltage)	15V を超え 30V 以下のもの (Exceeding 15V and less than or equal 30 30V)
変圧器 (Transformer)	あるもの (With transformer)
変圧器の巻線の絶縁の種類 (Transformer winding insulation class)	B 種のもの (Class B)
直流電圧の調整装置 (DC voltage adjusting mechanism)	ないもの (Without adjusting mechanism)
回路の保護機構 (Circuit protection device)	あるもの (With circuit protection device)
器体スイッチ (Body switch)	ないもの (Without body switch)
外郭の材料 (Outer case material)	合成樹脂のもの (Plastic)
用途 (Application)	その他のもの (Other)
電源電線と器体との接続の方式 (Method of attaching power supply cord)	接続器利用のもの (Coupling Device)
二重絶縁 (Double insulation)	施してないもの (Without double insulation)

テュフ ラインランド 香港 リミテッド
 TÜV Rheinland Hong Kong Ltd.

ゴールドフィンancialグローバルスクエア8-10F,
 7ワンタイロード、クローンベイ、クローン、香港
 8-10 Floor, Golden Financial Global Square,
 7 Wang Tai Road, Kowloon Bay,
 Kowloon, Hong Kong

発行者 Issued by



氏名 Name Marvin Wing

Customer: Switching Mode Power Supply
Model: SWPP-24003000-W
SPECIFICATION NO.:TAE-1437
Part no.: SWPP-24003000-WA1

PRODUCT SPECIFICATIONS



Date of Issue: 2012/08/16
Attestation Number: SECE1207123

Product: AC/DC Adapter

Model No.: SWPP-xxxxyyyyy-W ("xxxx" can be 1200-2400 denote different output voltage, 1200=12.0Vdc, 2400=24.0Vdc, "yyyy" can be 2500-8300 denote different output current, 2500=2.50A, 8300=8.30A W=Denote product type.)

Applicant: HONGKONG POWER-TEK INTERNATIONAL CO. LIMITED.

Address: ROOM 1708A1 NAN FUNG TOWER, 173 DES VOEUX ROAD C., HONG KONG

And, in accordance to the following Applicable Directives

**Applicable to EUROPEAN COUNCIL DIRECTIVE 2004/108/EC
(The Information Technology Equipment)**

That this product has been assessed against the following Applicable Standards

EN 55022:2010 (Class B)
EN 61000-3-2: 2006/ A2: 2009
EN 61000-3-3 : 2008

EN 55024 : 2010
IEC 61000-4-2 : 2008
IEC 61000-4-3 : 2010
IEC 61000-4-4 : 2011
IEC 61000-4-5 : 2005
IEC 61000-4-6 : 2008
IEC 61000-4-8 : 2009
IEC 61000-4-11 : 2004

CERPASS hereby acknowledges that:

The measurements shown in this test report may issue a DECLARATION of CONFORMITY and apply the CE mark in accordance to European Union Rules.

Attestation by: 
Miro Chueh / Technical director

2012/08/16
Date

CERPASS TECHNOLOGY CORPORATION
No.66, Tangzhuang Road, Suzhou Industrial Park, Jiangsu, China
TEL:+86-512-6917-5888 FAX: +86-512-69175666

Customer: Switching Mode Power Supply
Model: SWPP-24003000-W
SPECIFICATION NO.:TAE-1437
Part no.: SWPP-24003000-WA1

PRODUCT SPECIFICATIONS



NOTICE OF COMPLETION AND AUTHORIZATION TO APPLY THE UL MARK

2014/06/18

Hongkong Power-tek International Co Ltd
Mr. JIASHI WANG
Room 1708, A1
Nan Fung Tower
173 Des Voeux Rd C
Central, Hong Kong

Our Reference: File E333054, Vol. X3 Project Number 4786461405
Your Reference: N/A
Project Scope: UL/CUL: AC/DC Adapter, Model SWPP-xxxxyyyy-W, Reprint update from Listed to Recognized under E333054-A3.

Dear Mr. JIASHI WANG:

Congratulations! UL's investigation of your product(s) has been completed under the above Reference Number and the product was determined to comply with the applicable requirements. This letter temporarily supplements the UL Follow-Up Services Procedure and serves as authorization to apply the UL Mark at authorized factories under UL's Follow-Up Service Program. To provide your manufacturer(s) with the intended authorization to use the UL Mark, you must send a copy of this notice to each manufacturing location currently authorized under File E333054, Vol. X3.

Records in the Follow-Up Services Procedure covering the product are now being prepared and will be sent in the near future. Until then, this letter authorizes application of the UL Mark for 90 days from the date indicated above.

Additional requirements related to your responsibilities as the Applicant can be found in the document "Applicant responsibilities related to Early Authorizations" that can be found at the following web-site:
<http://www.ul.com/EAResponsibilities>

Any information and documentation provided to you involving UL Mark services are provided on behalf of UL LLC (UL) or any authorized licensee of UL.

We are excited you are now able to apply the UL Mark to your products and appreciate your business. Feel free to contact me or any of our Customer Service representatives if you have any questions.

Very truly yours,

Candy Guo
+86 20 3213 1204
Engineer Project Associate
Candy.Guo@ul.com

Reviewed by:

William R. Carney
847/664-1088
Chief Engineer Director I
William.R.Carney@ul.com

NWT836C-60E390

This is an electronically generated letter. Signatures are not required for this document to be valid.

Page 1 of 1