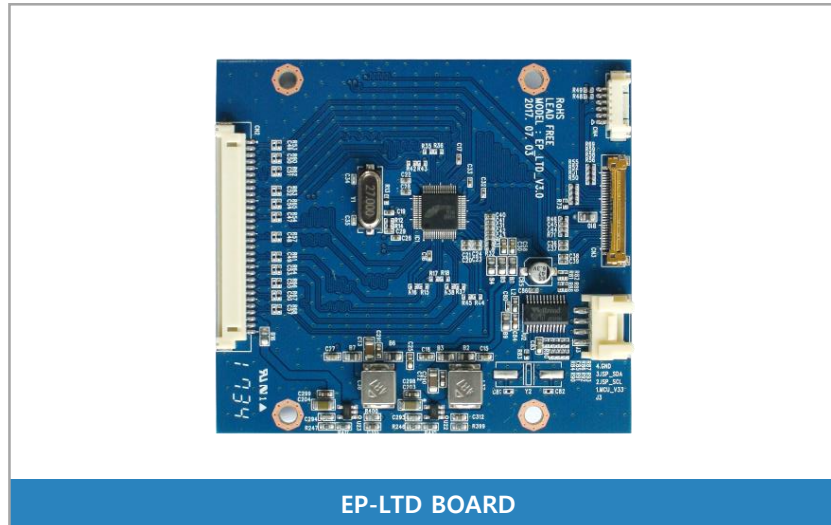


Firmware Download

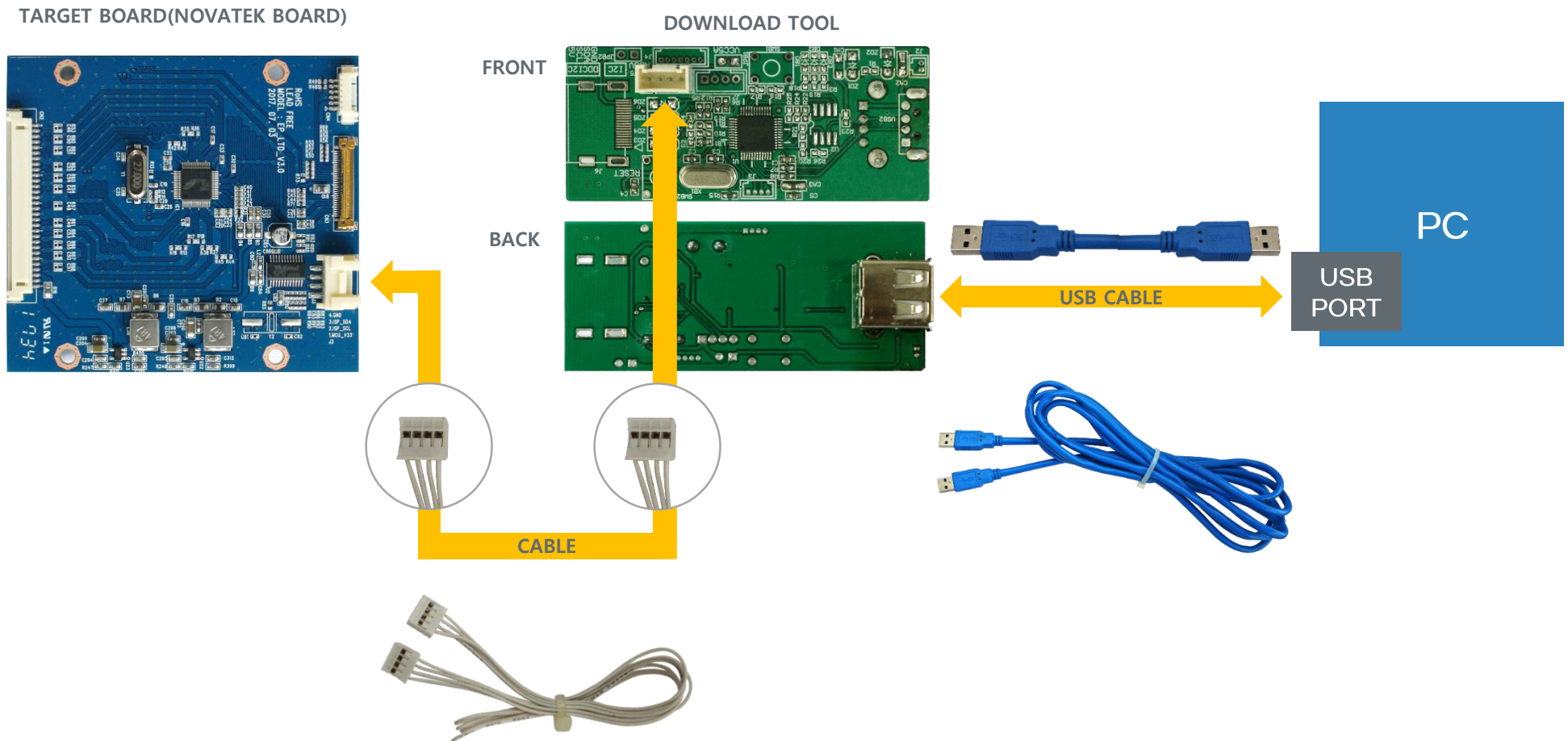
Manual

EP-LTD

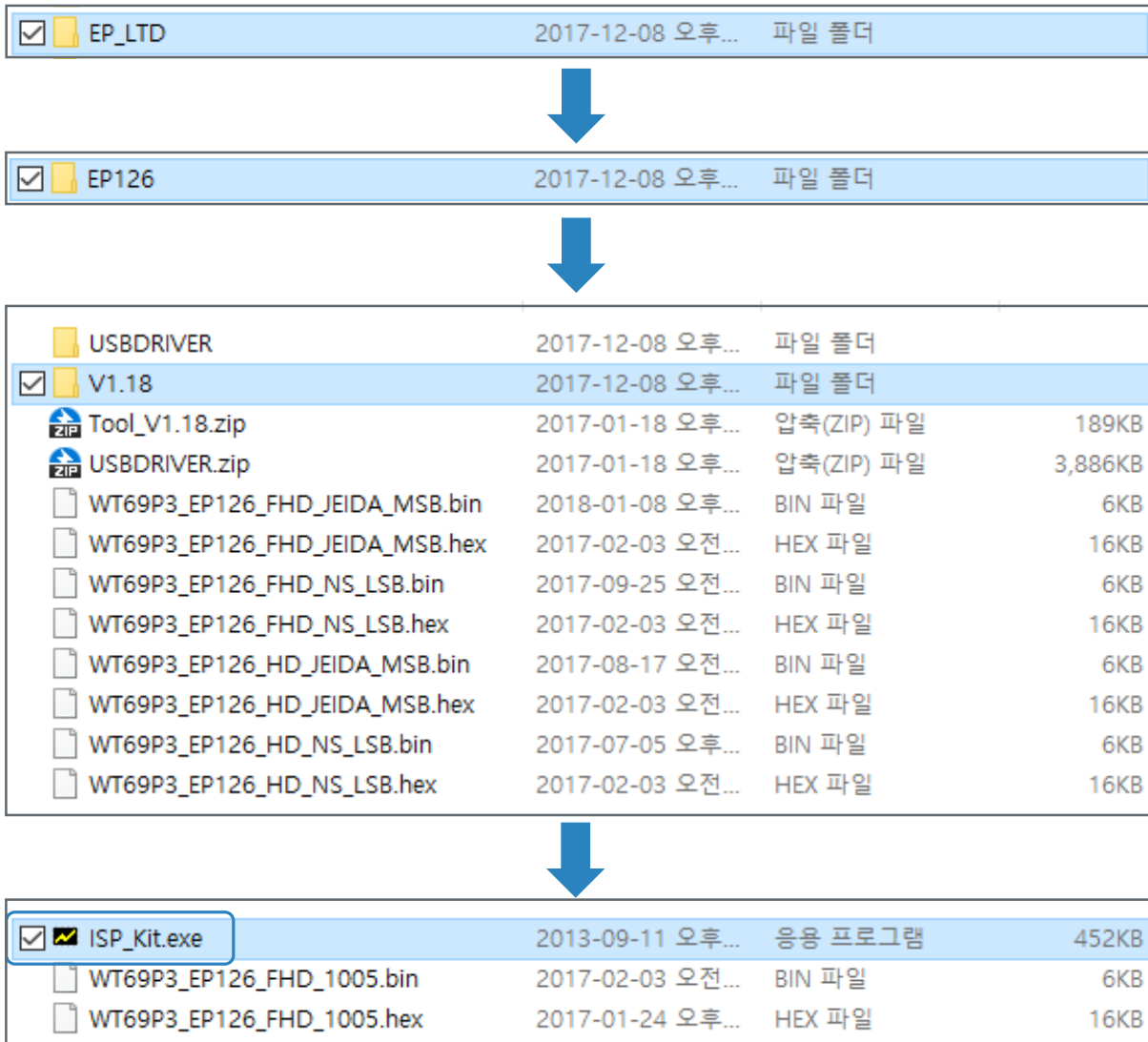
1. Please prepare the following items.



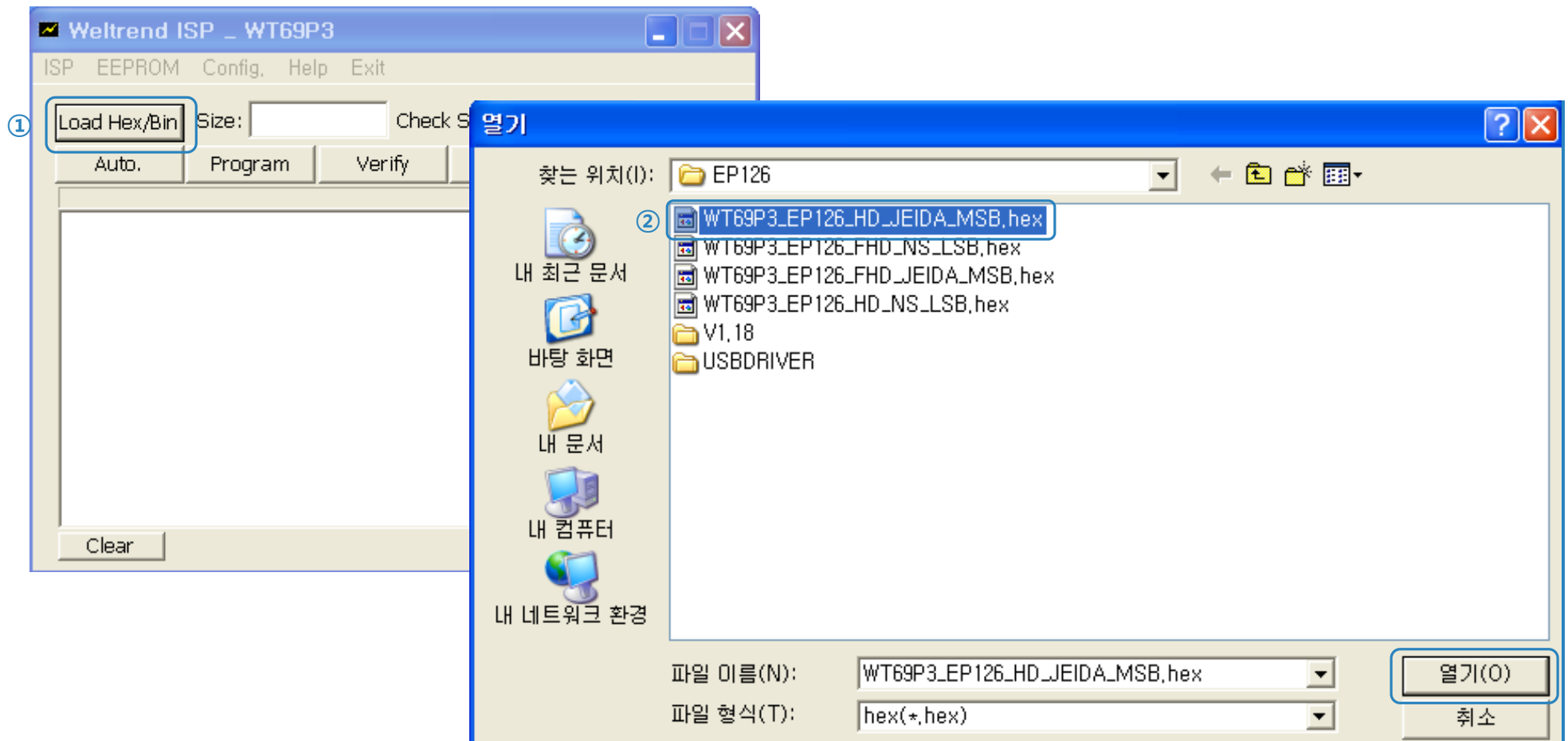
2. Connect the target board and the DOWNLOAD TOOL to the PC with the prepared cable.



3. Double-click the **ISP_Kit.exe** file in the downloaded folder to run it.



- ① Click the **Load Hex/Bin** tab.
- ② Please open the **hex** file.



5. ① Click the **Auto** tab.

② When the firmware download is complete, the message **Verify elapsed time: 2.1 seconds** appears on the screen as shown below.

