

Firmware Download

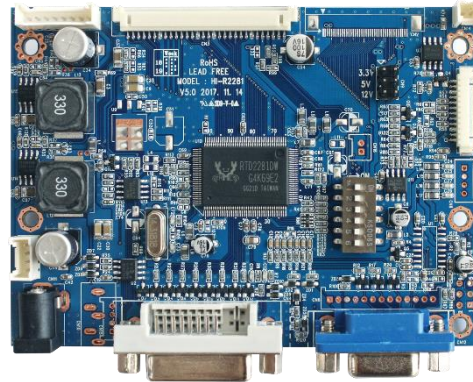
Manual

DDC

Firmware Download Tool



1. Please prepare the following items.



TARGET BOARD (DDC BOARD)



FIRMWARE DOWNLOAD TOOL

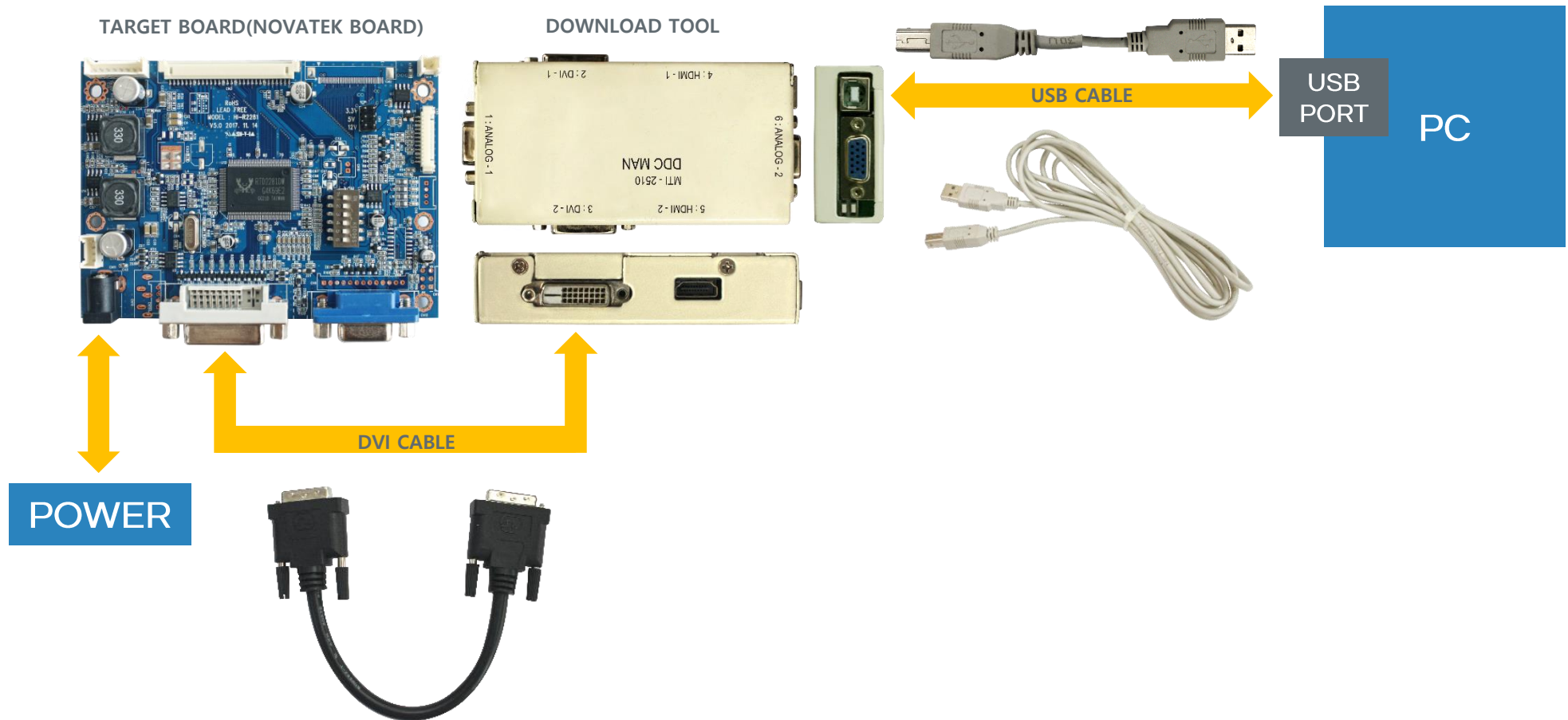


DVI CABLE / HDMI CABLE

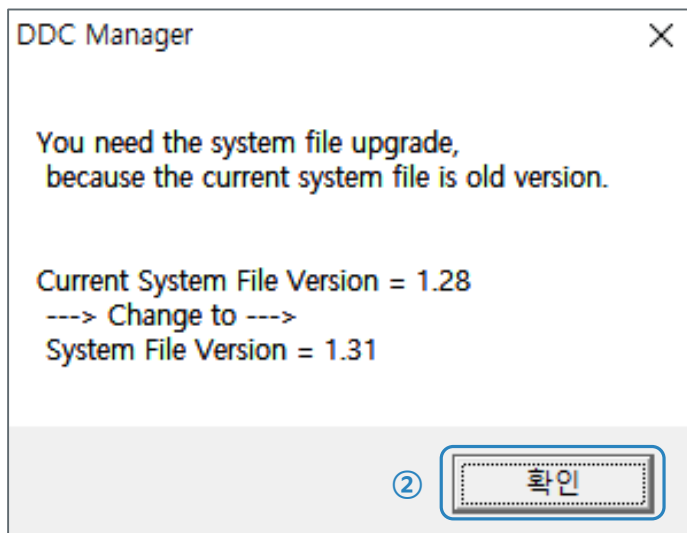


USB CABLE

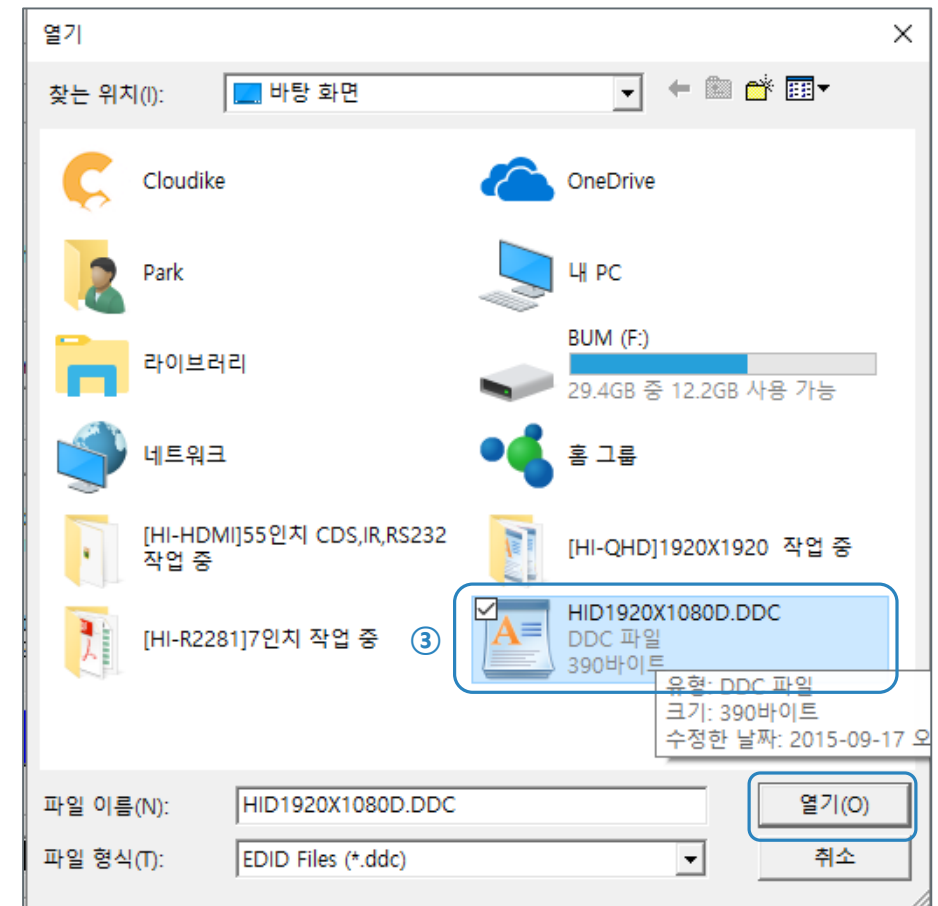
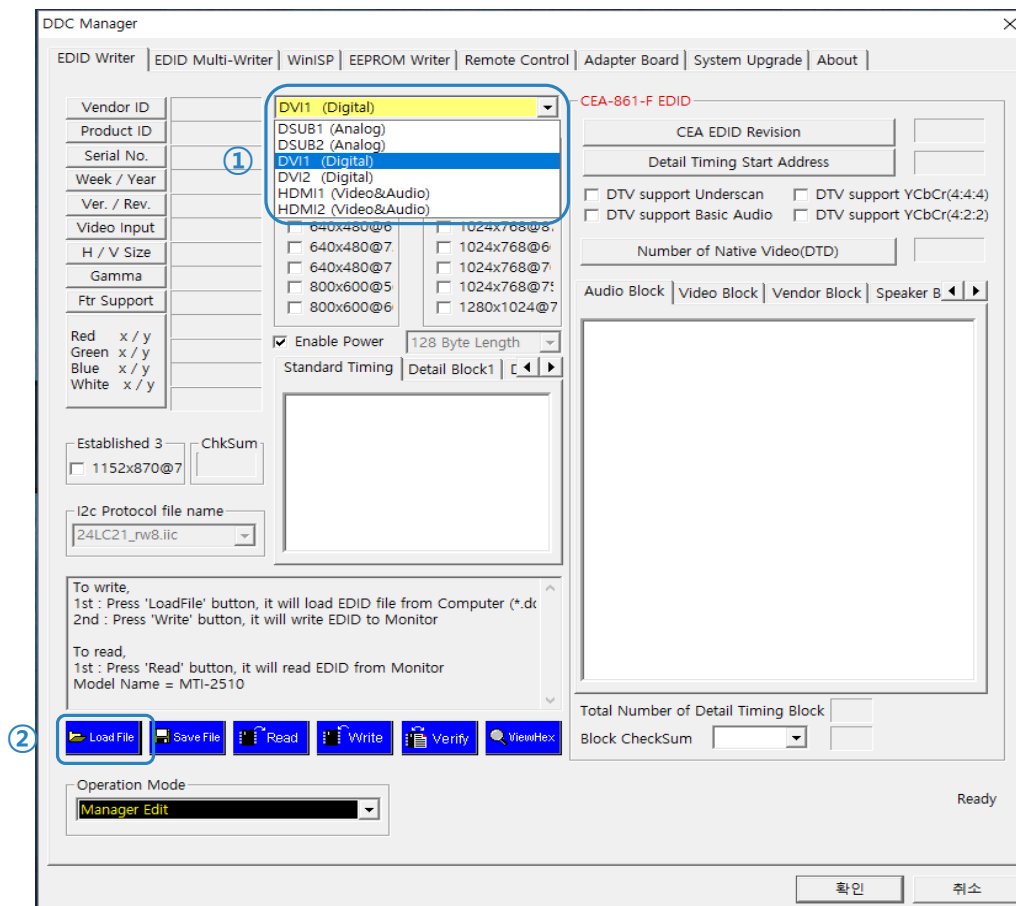
2. Connect the target board and the DOWNLOAD TOOL to the PC with the prepared cable.



3. ① Double-click the attachment file **winDDCU.exe** to run it.
- ② When the following information window appears, click **OK**.



4. ① Please select a port to put on target board. (Select RGB, DVI, or HDMI PORT. For details, refer to the DDC TOOL manual.)
- ② Please click **LOADFILE**.
- ③ Please open the **DDC** file.



5. ① Make sure that the DDC to be loaded into the DVI port is in the loaded state.
- ② Click **Write**.
- ③ **Verify** is **OK** when the firmware download is completed.

