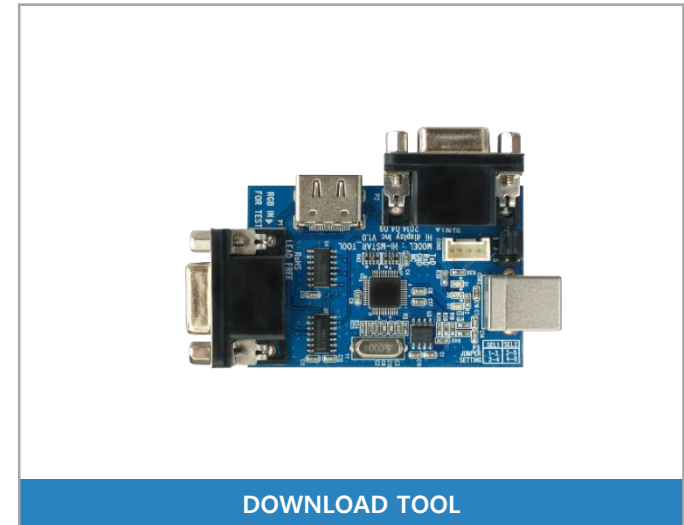


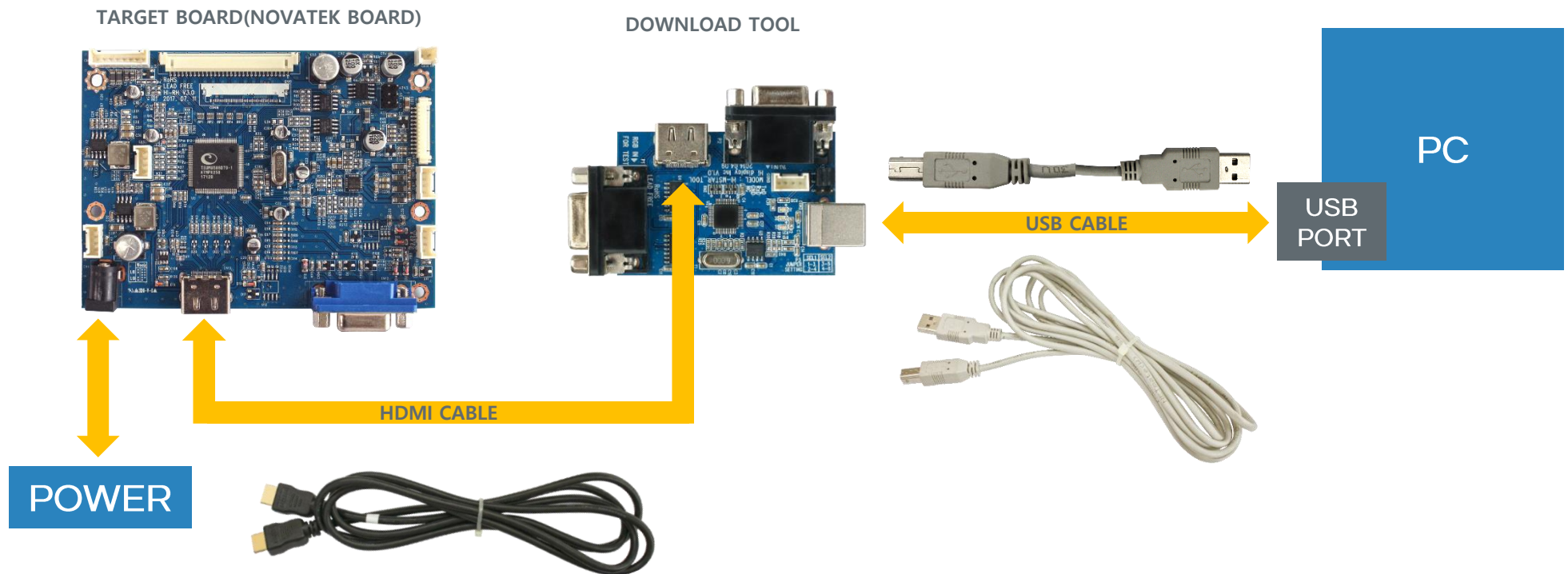
# Mstar

Application Model. [HI-RH](#)  
[HI-MEDIA](#)  
[HI-DMPS](#)  
[HI-AVL\\_VE](#)  
[HI-MULTI](#)  
[HI-GM3458](#)  
[HI-UHD\\_TV](#)  
[GM-LENOA](#)

1. Please prepare the following items.

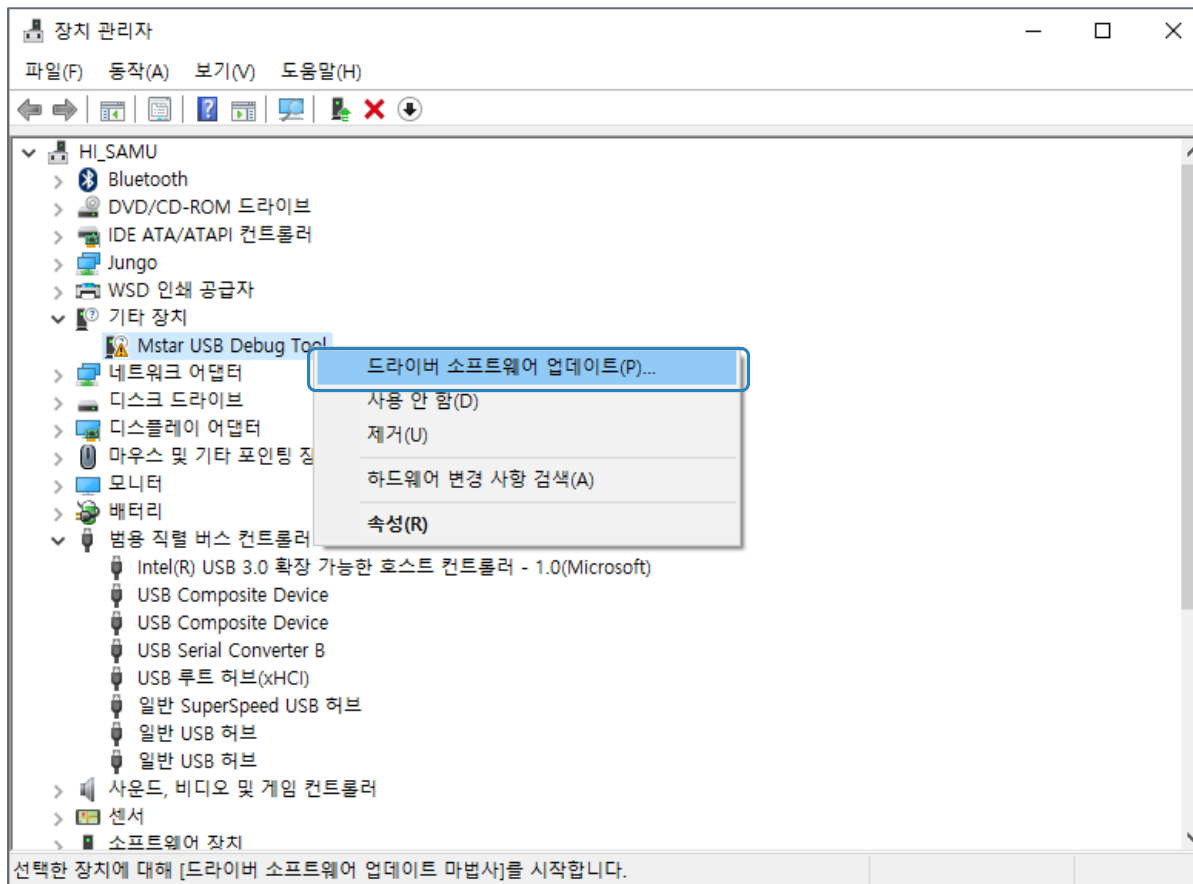


2. Connect the target board and the DOWNLOAD TOOL to the PC with the prepared cable.



## 3. Launch Device Manager

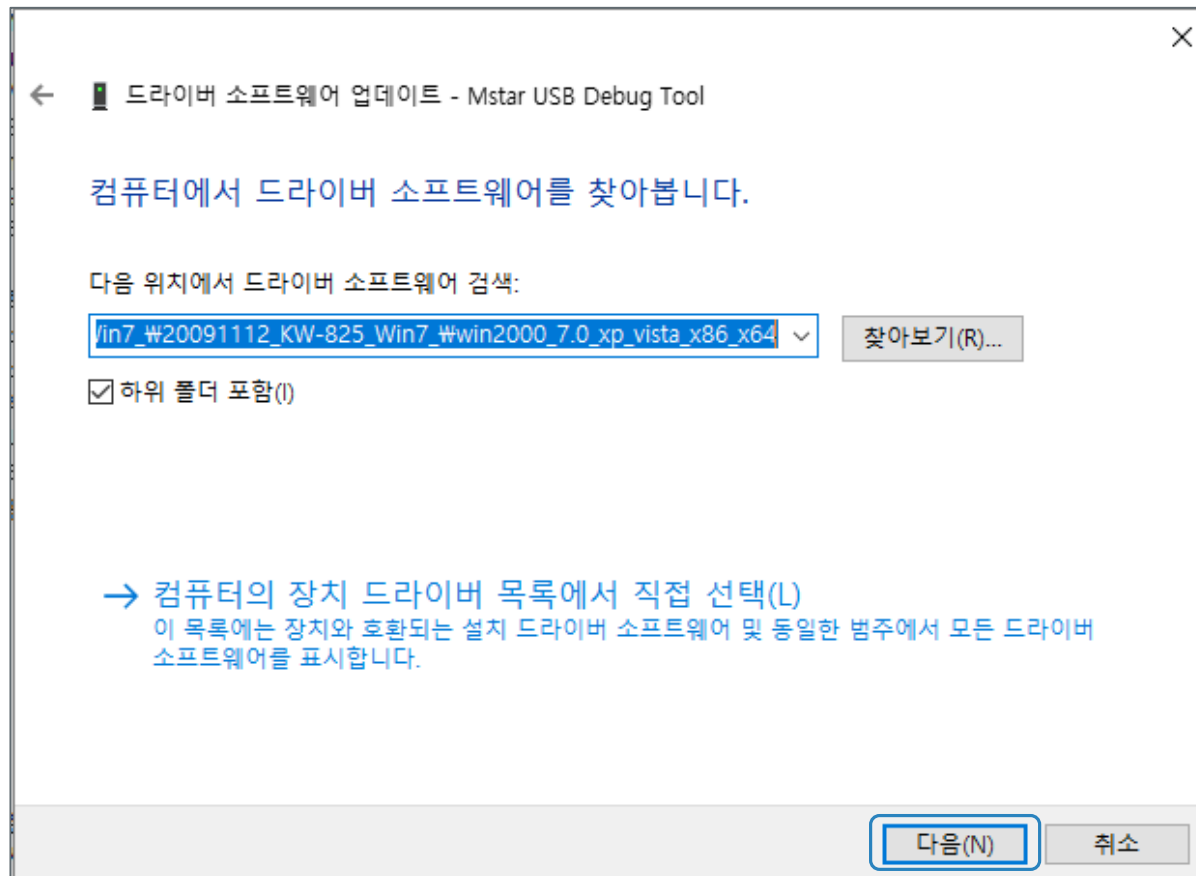
Right-click the [Mstar USB Debug Tool] tab marked with the exclamation point of the other device and **update the driver software**.



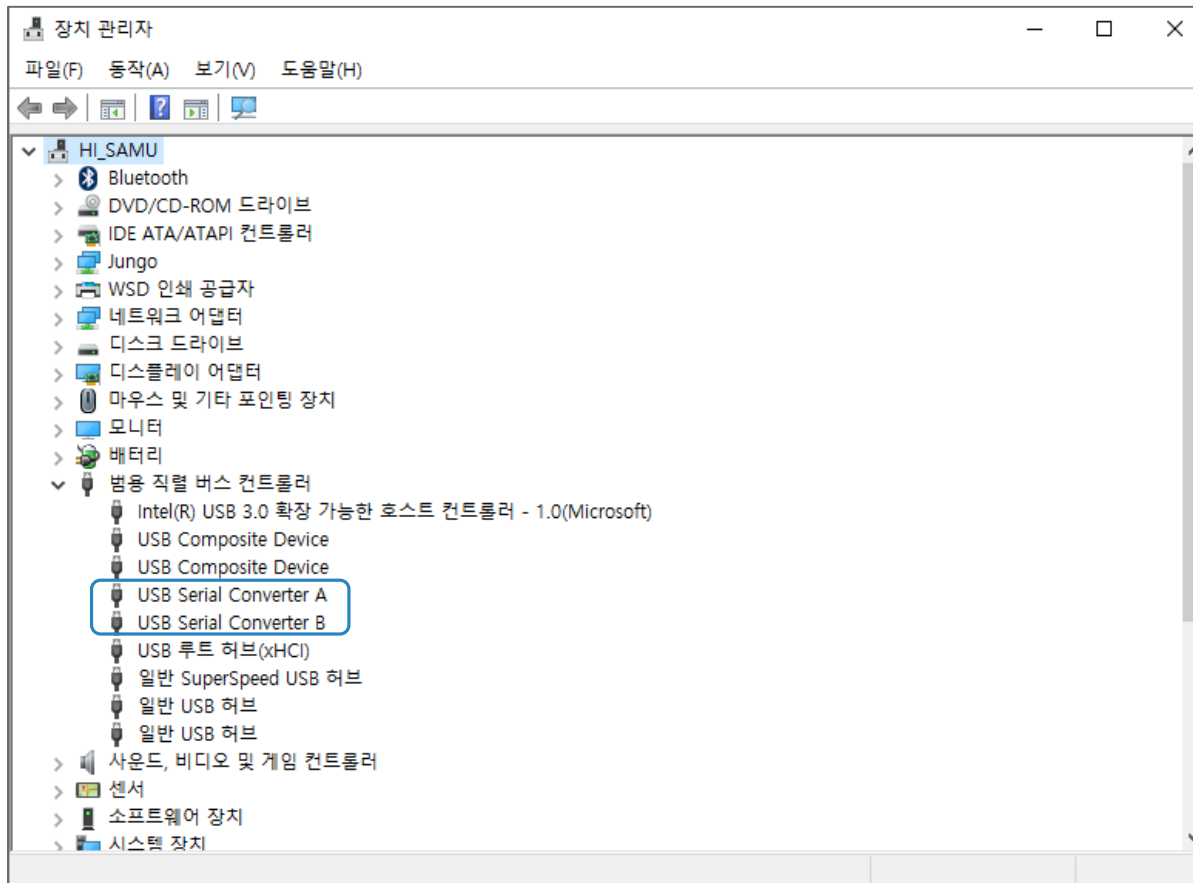
4. Click **Browse my computer for driver software**.



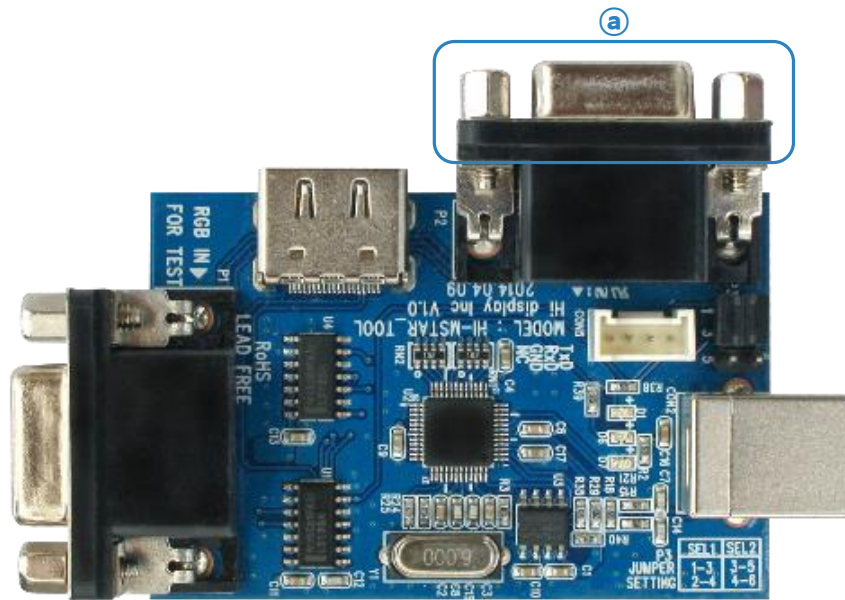
5. In the [Search for driver software at the following location] tab, enter the attached driver folder Path, and click Next.



6. Please check if **USB Serial Converter A, B** is loaded properly from universal serial bus controller.

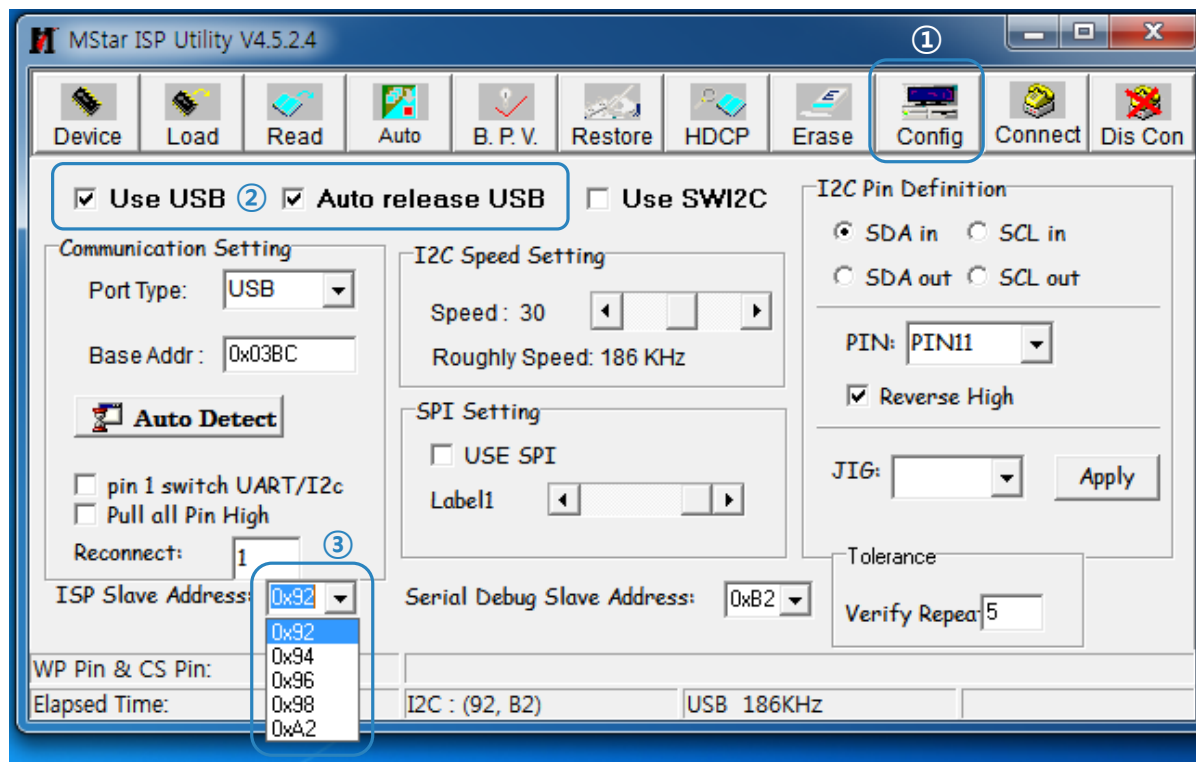


- ① Connect the **a** part of the RGB port of the target board to the download tool.
- ② Please run the **ISP\_Tool** file.



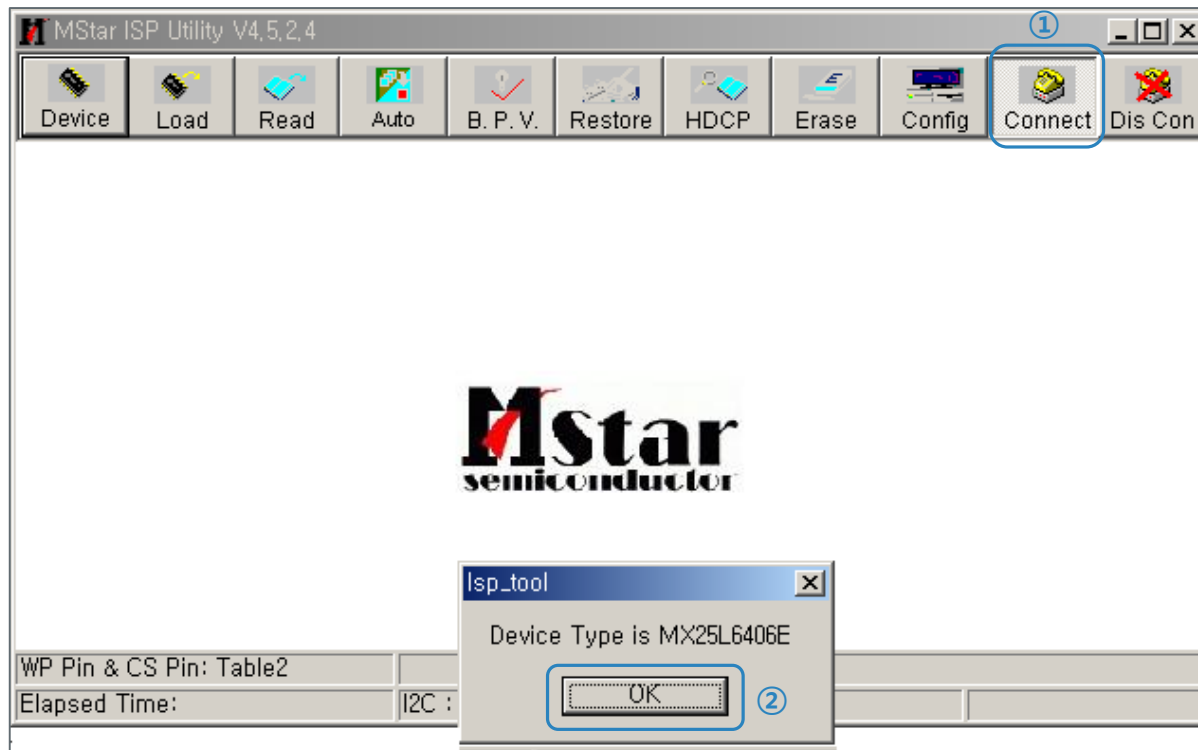


8. ① Click the **config** tab.
- ② Check **Use USB** and **Auto release USB**.
- ③ Set the value of **ISP Slave Address** to 0x92. (If you do not set a value, you can not download it.)

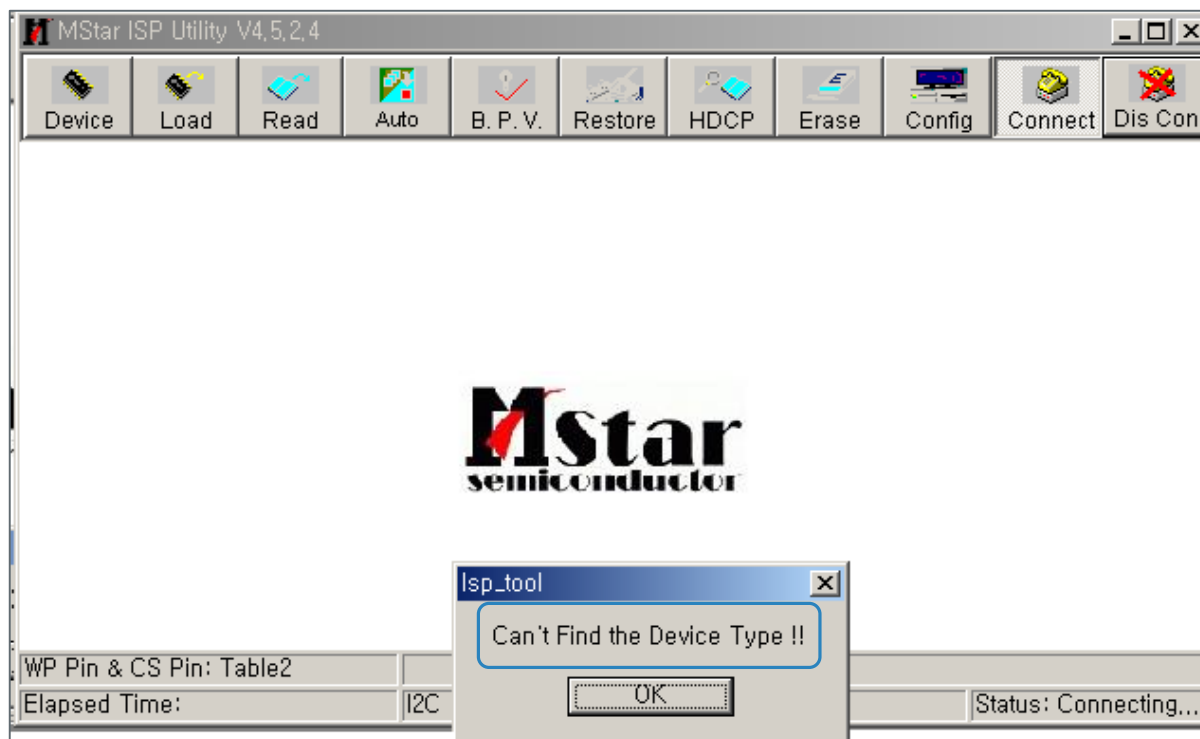


9. ① Click the **Connect** tab.

② When the connection with the target board is **Completed** and the following message appears, click **OK**.

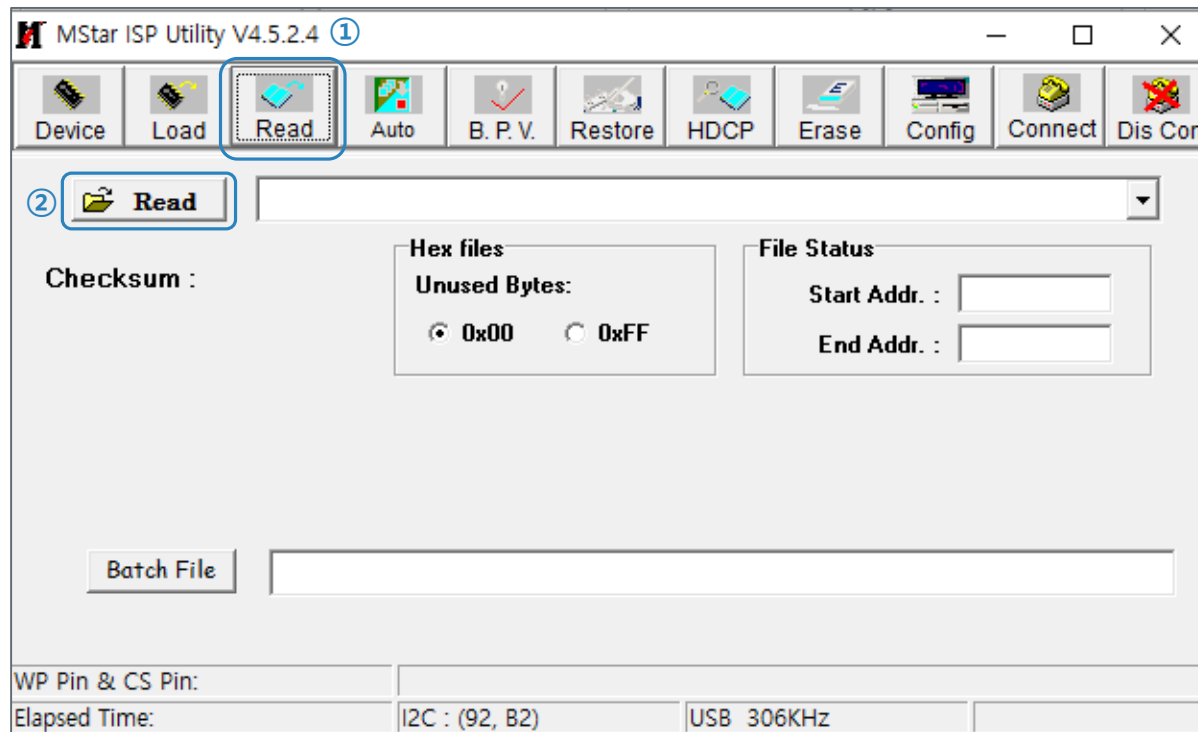


**[Error Message]** If the target board and Download tool are not connected, the following message appears.

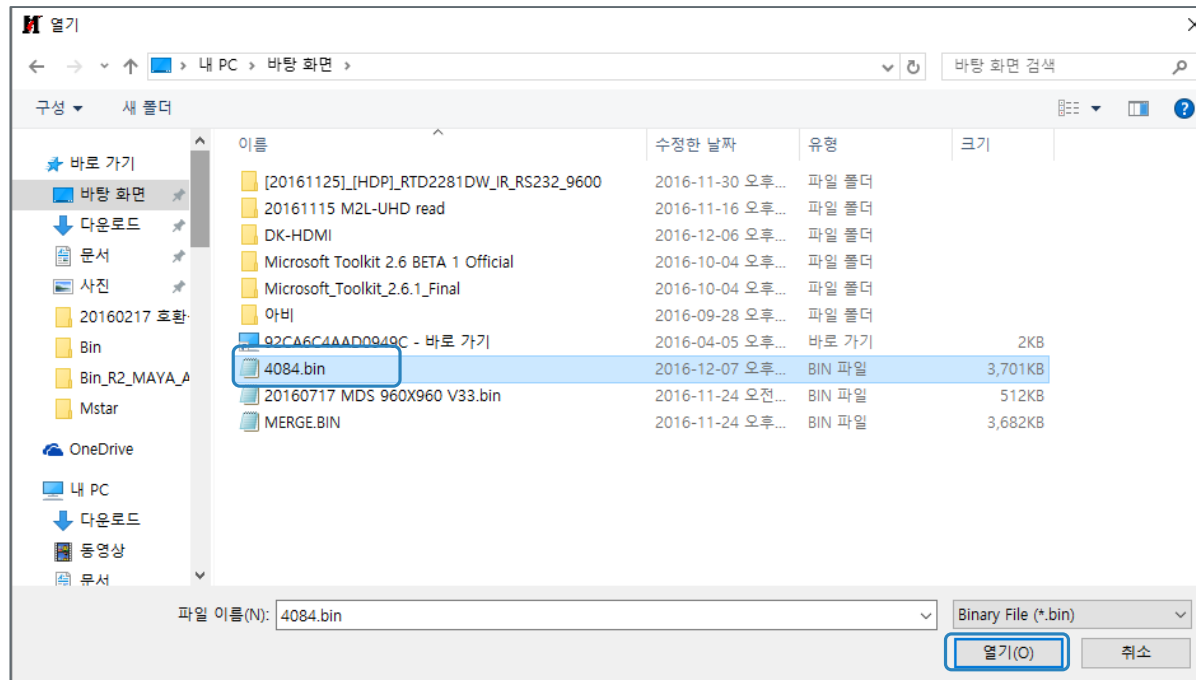


10. ① Click the **Read** tab.

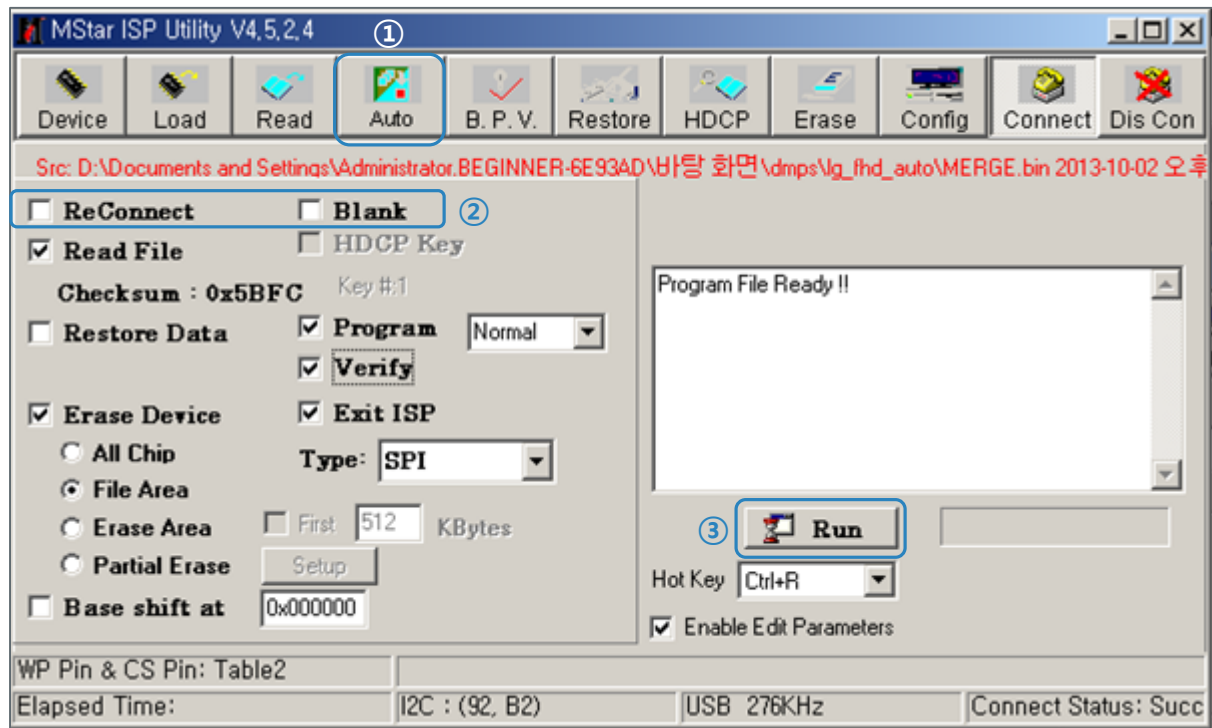
② Click the **Read icon** in the active window.



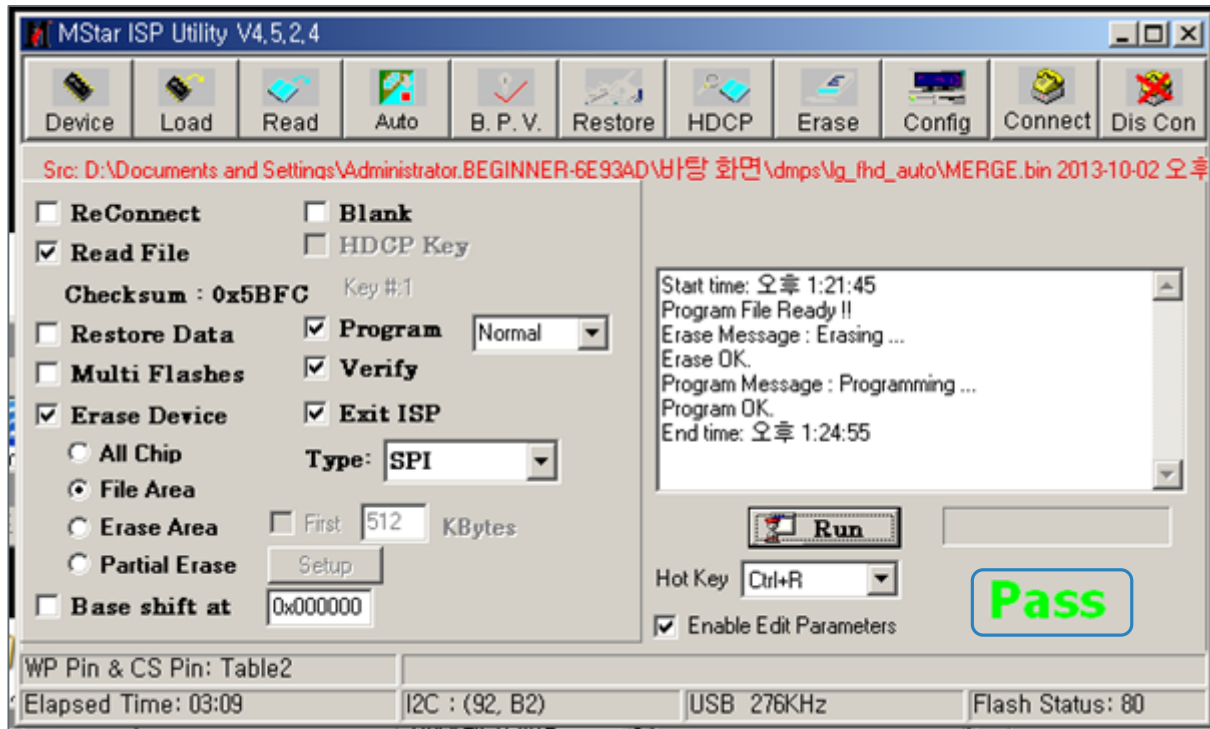
11. Please open **bin file** after downloading.



12. ① Click the **Auto** tab.
- ② Uncheck **ReConnect** and **Blank**.
- ③ Click the **Run icon**.



13. When the firmware download is completed, a **Pass** message appears.



[Error Message] If the firmware download fails, the **Program Error** is displayed.

